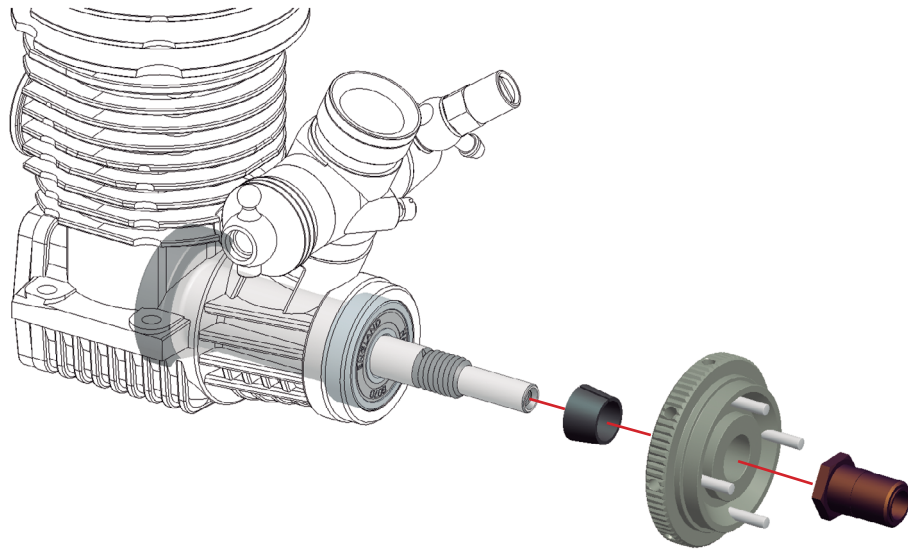


STEP 1

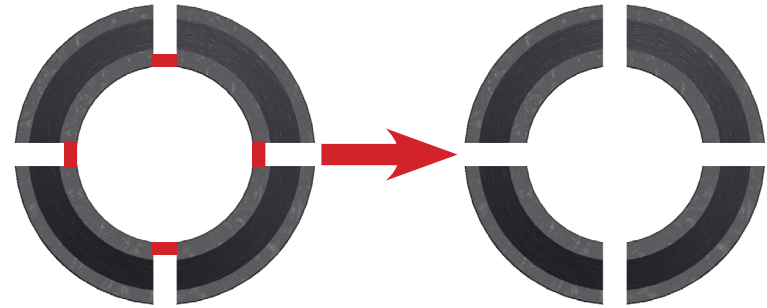


! 1-クラッチを組み込んだエンジンをシャシーに搭載した際にピニオンとスパーとの位置がうまく合わない場合は、フライホイールコーン下にシムを入れて下さい。

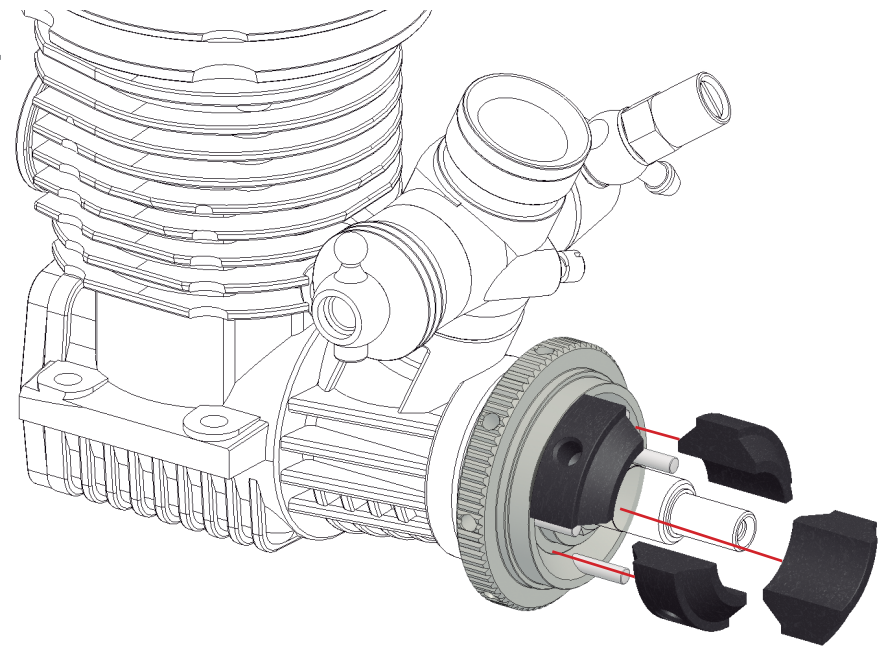
2- フライホイール側面の穴は、フライホイールを固定したい際にレンチ等を差し込むための穴です。

STEP 2

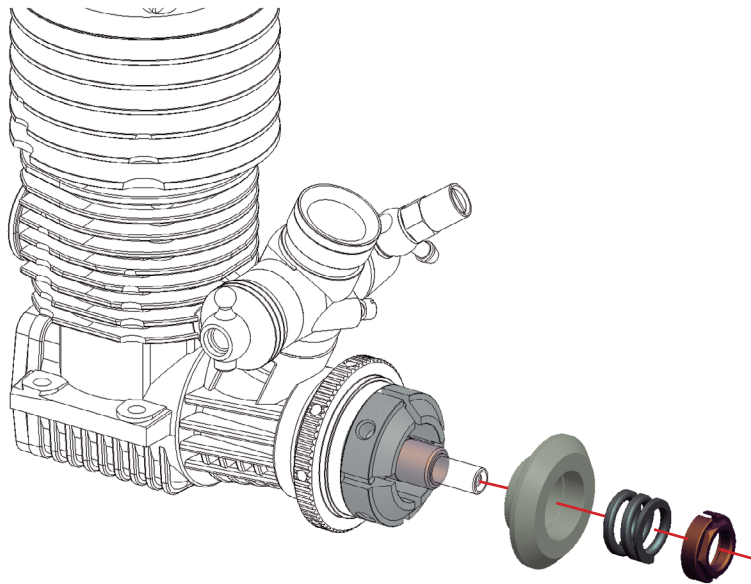
2.1 **!** シューをカットし、カットした面を綺麗にして下さい。



2.2



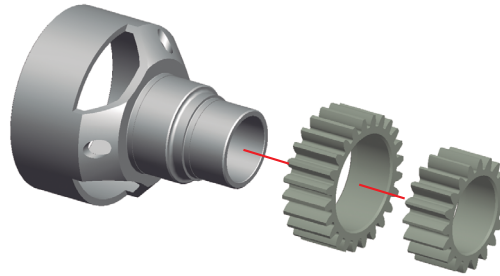
STEP 3



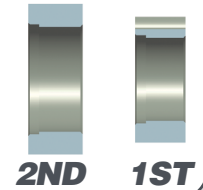
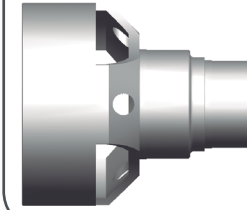
For adjusting the default clutch spring tension:
 1- Screw in the adjusting nut all the way.
 2- Unscrew it one and a half turns.
 3- Fine tune the setup of your clutch on the track according to your driving style, track and weather conditions.

STEP 4

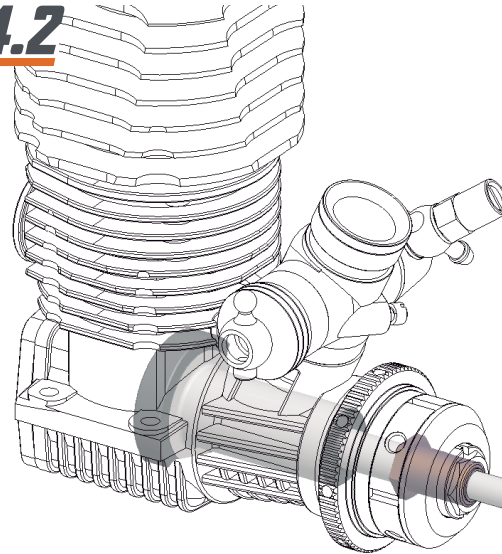
4.1



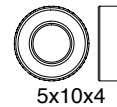
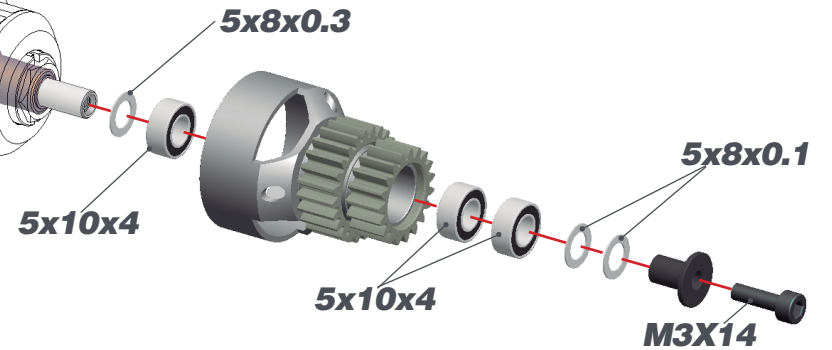
Note the orientation of the gears



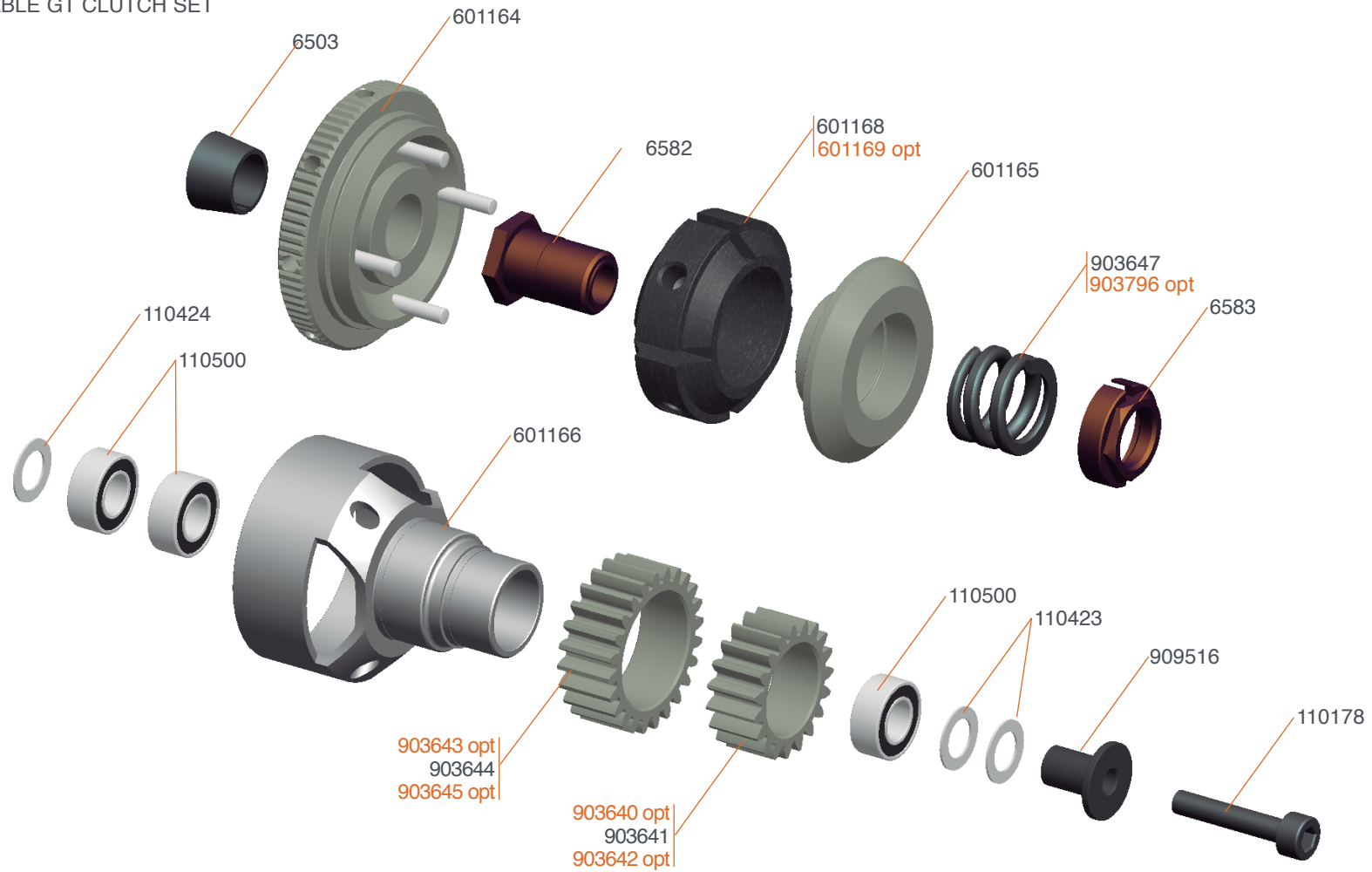
4.2



Place 5x8x0.1 and/or 5x8x0.3 shims to achieve a small amount of end play.



#601163 ADJUSTABLE GT CLUTCH SET



903640 Centax gear-pinion alu 18T XLI
 903642 Centax gear-pinion alu 20T XLI
 903643 Centax gear-pinion alu 23T XLI

903645 Centax gear-pinion alu 25T XLI
 903646 Centax gear-pinion alu set XLI (6)
 601169 Adjustable GT clutchshoe yellow

903796 Centax spring XX-hard