

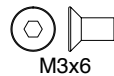
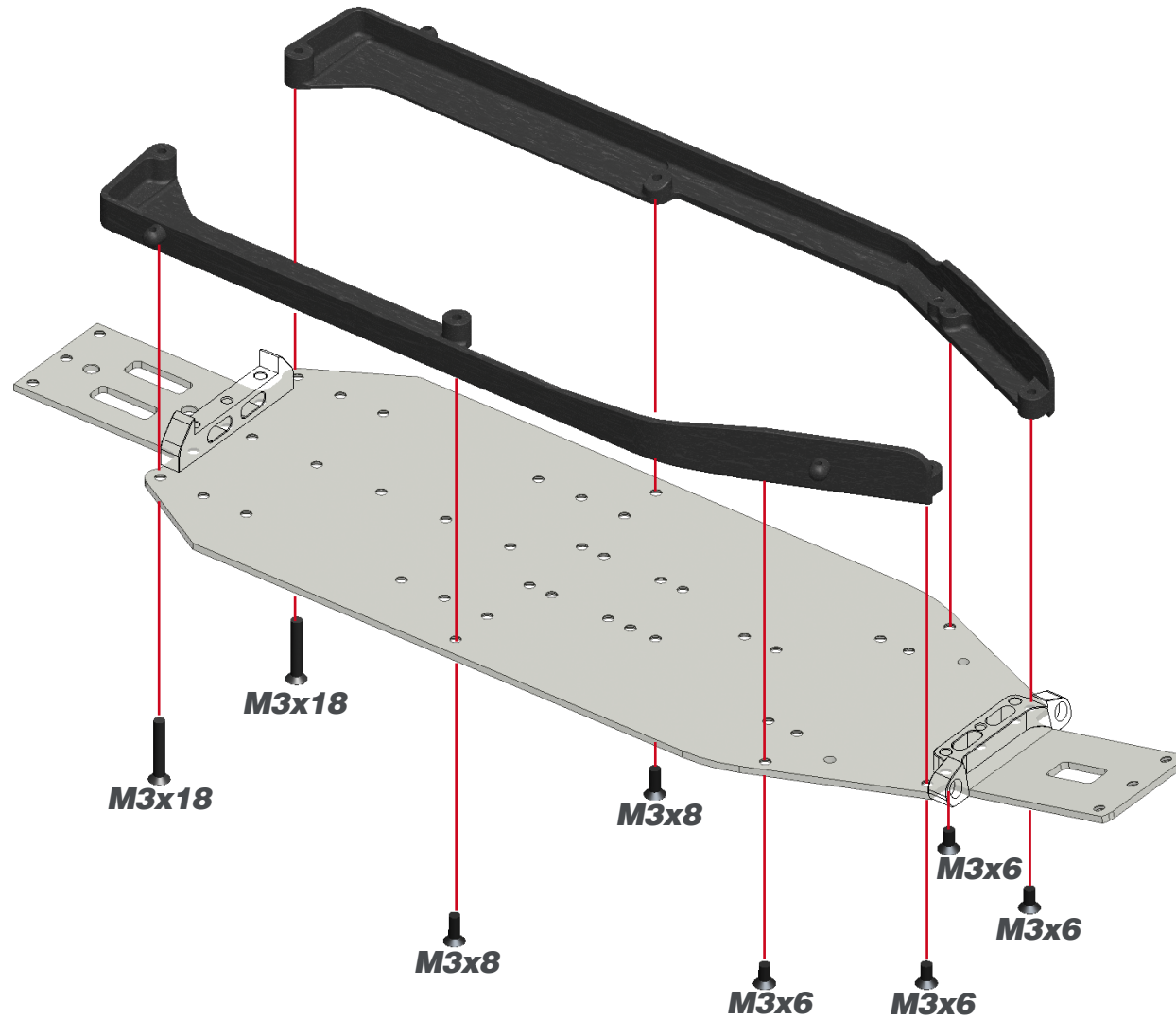
## STEP 7



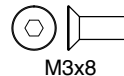
This manual shows how to assemble the SDX4 front servo and saddle battery layout.

The following steps replace the ones showed in the SDX4 kit manual.

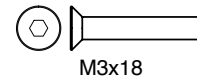
This layout must be used with the front motor configuration described in the SDX4 kit manual.



M3x6



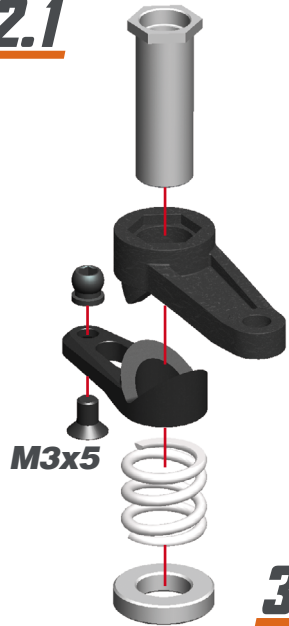
M3x8



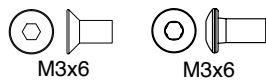
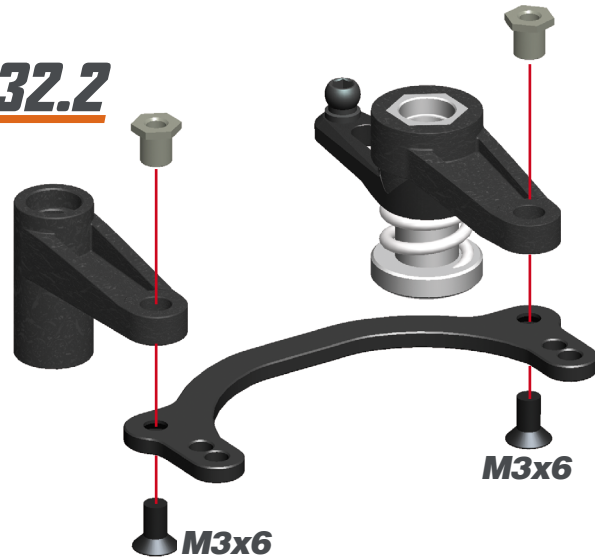
M3x18

# STEP 32

**32.1**



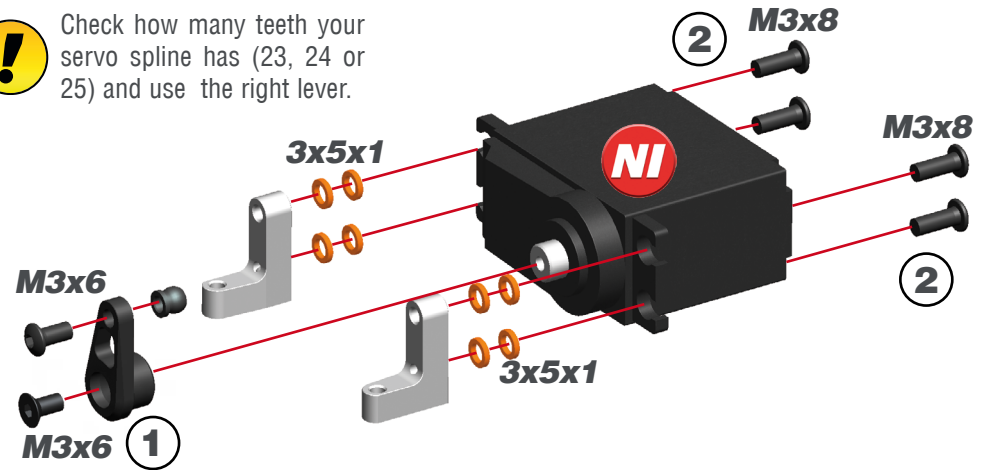
**32.2**



# STEP 36



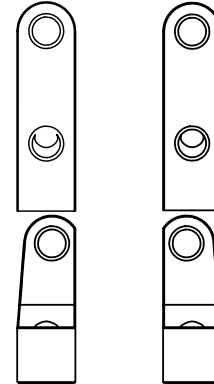
Check how many teeth your servo spline has (23, 24 or 25) and use the right lever.



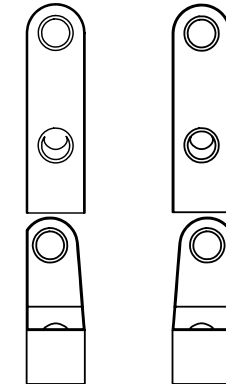
## SERVO MOUNTS

The SDX4 kit included two types of servo mounts. They are not symmetrical and can be used right or left depending in the servo width.

### OPTION 1 (WIDE)



### OPTION 2 (NARROW)

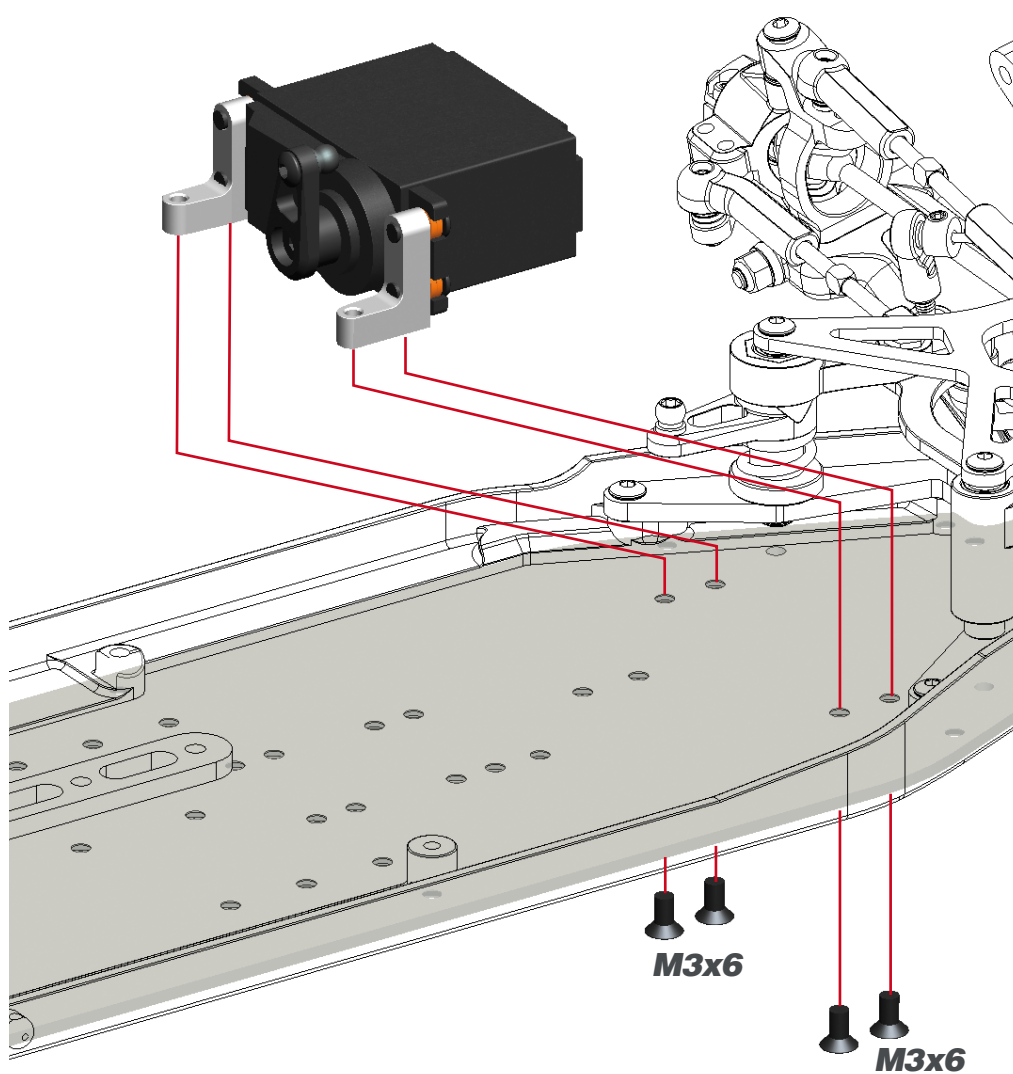


**A**

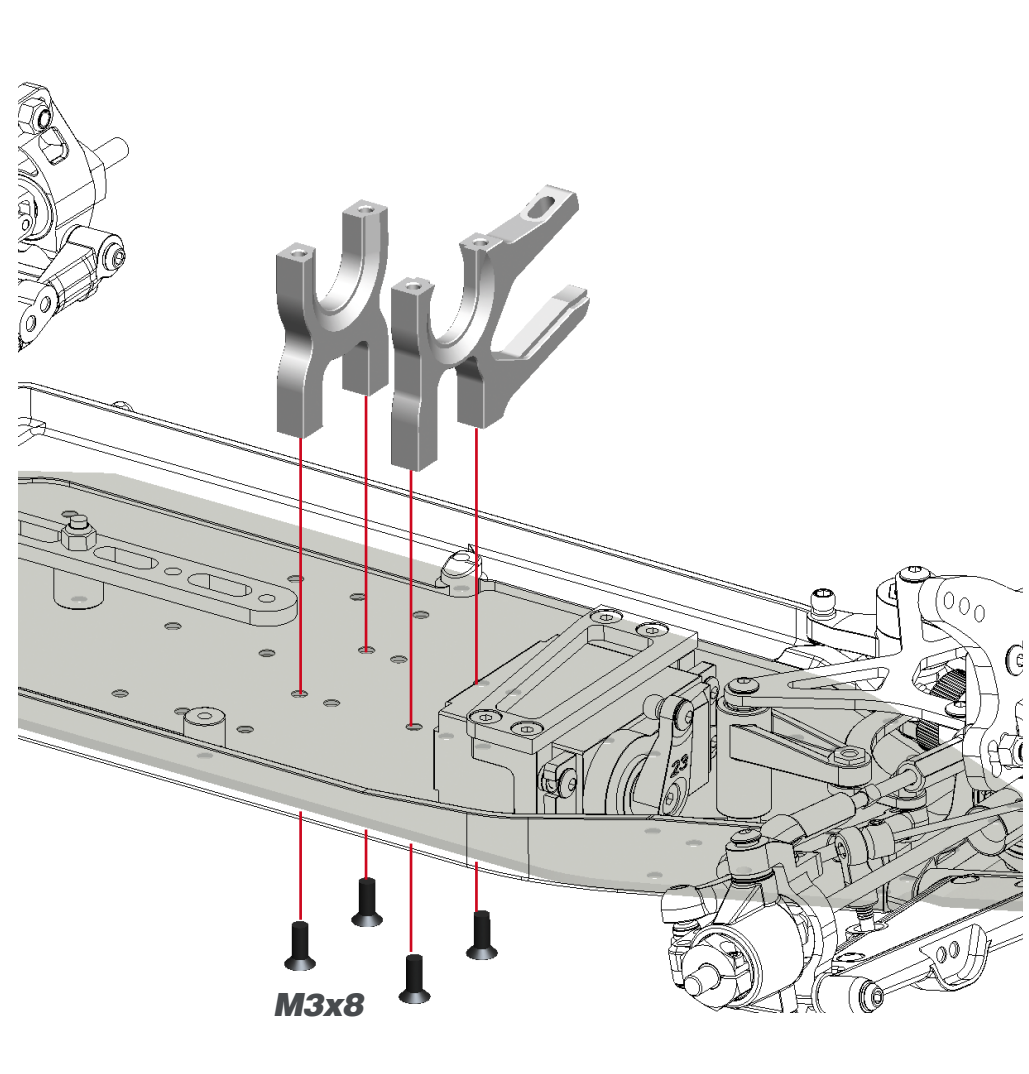
**B**



**STEP 37**

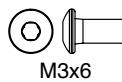
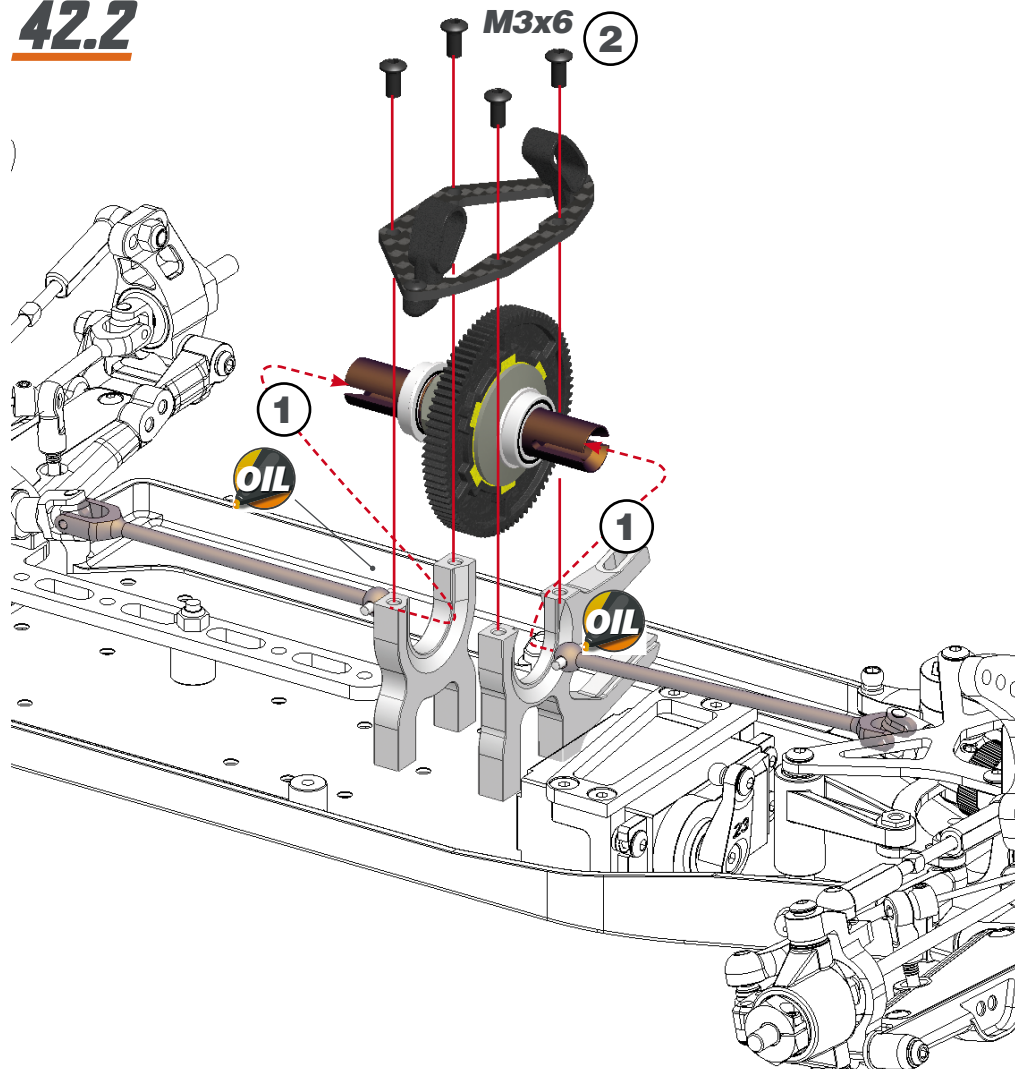


**STEP 40**



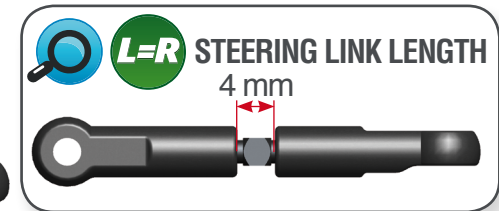
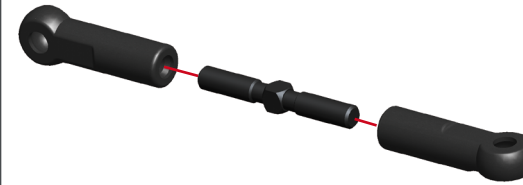
**STEP 42**

**42.2**

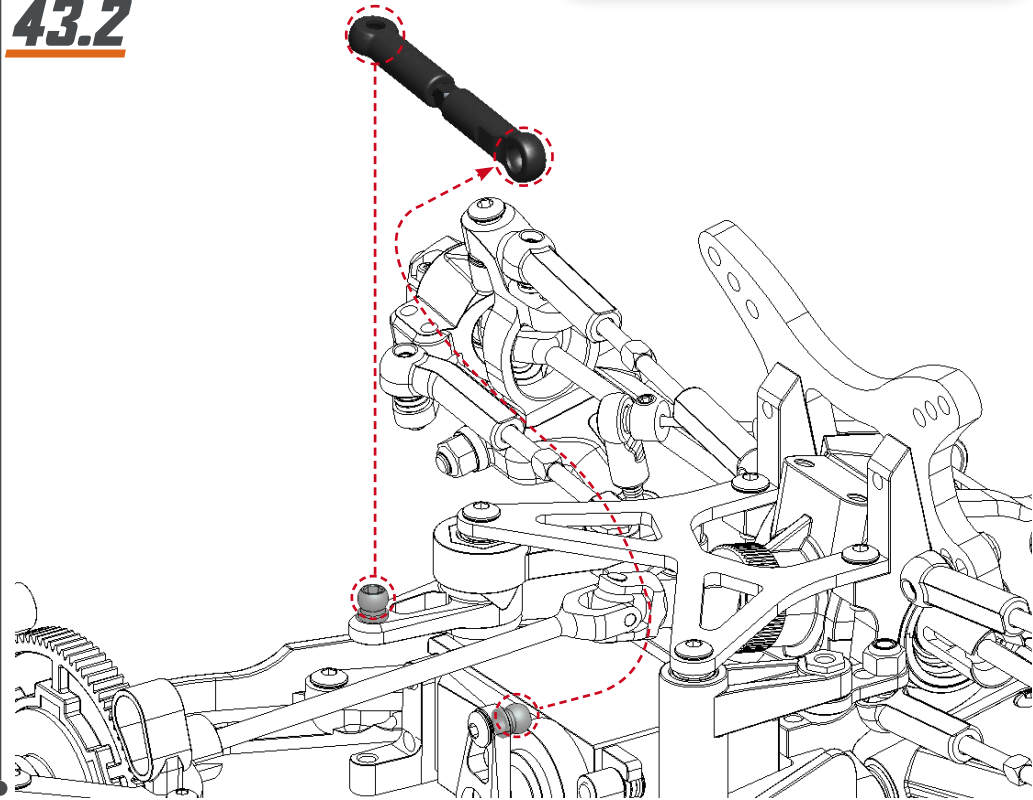


**STEP 43**

**43.1**



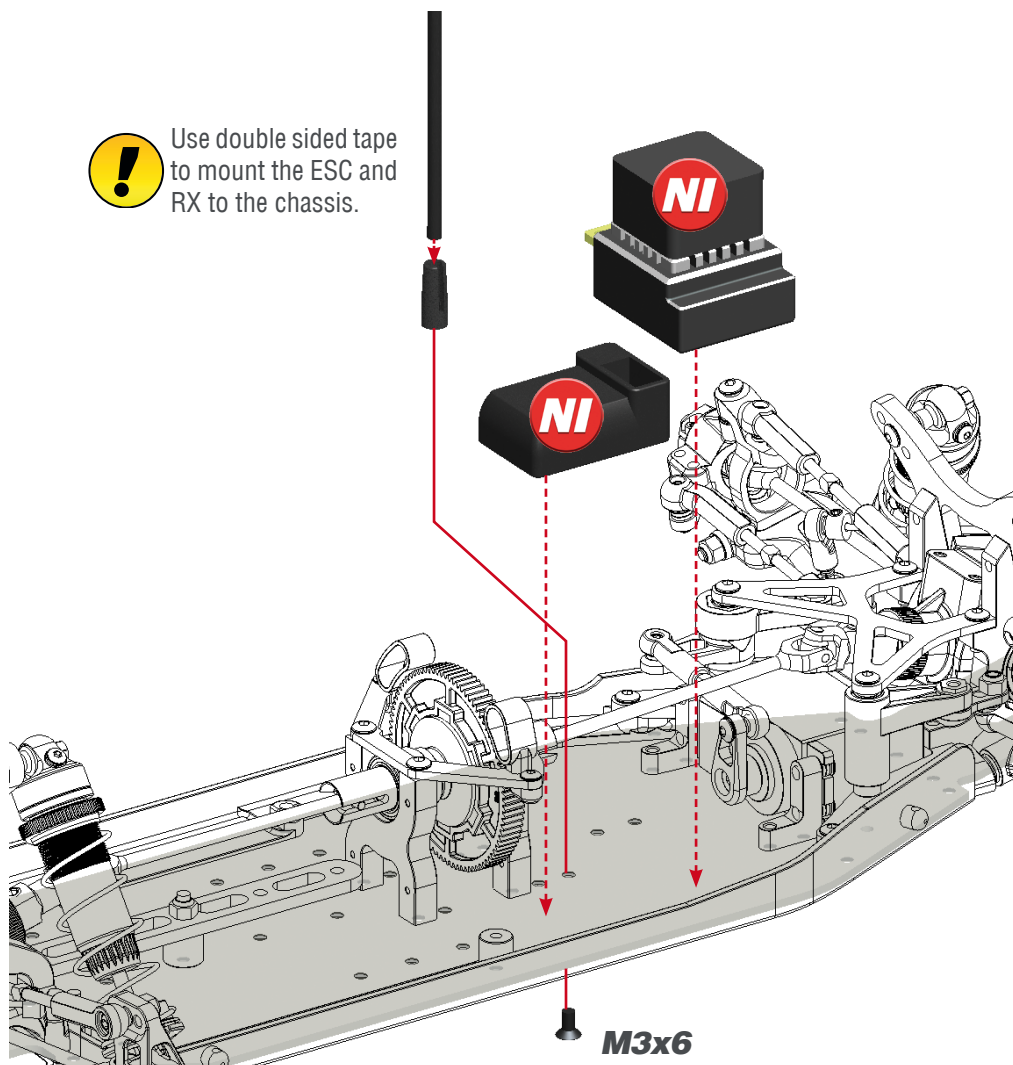
**43.2**



# STEP 50



Use double sided tape to mount the ESC and RX to the chassis.

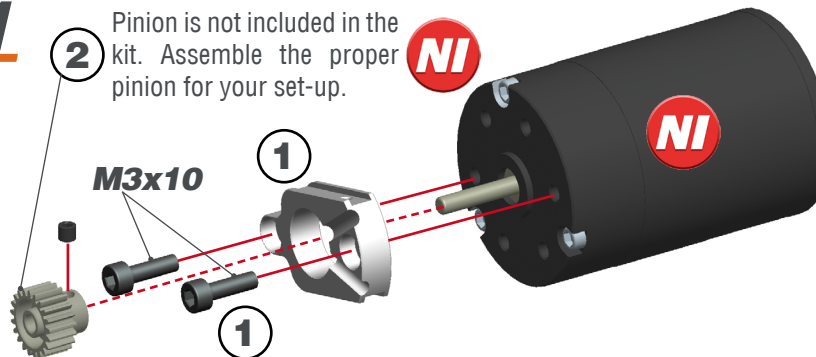


M3x6

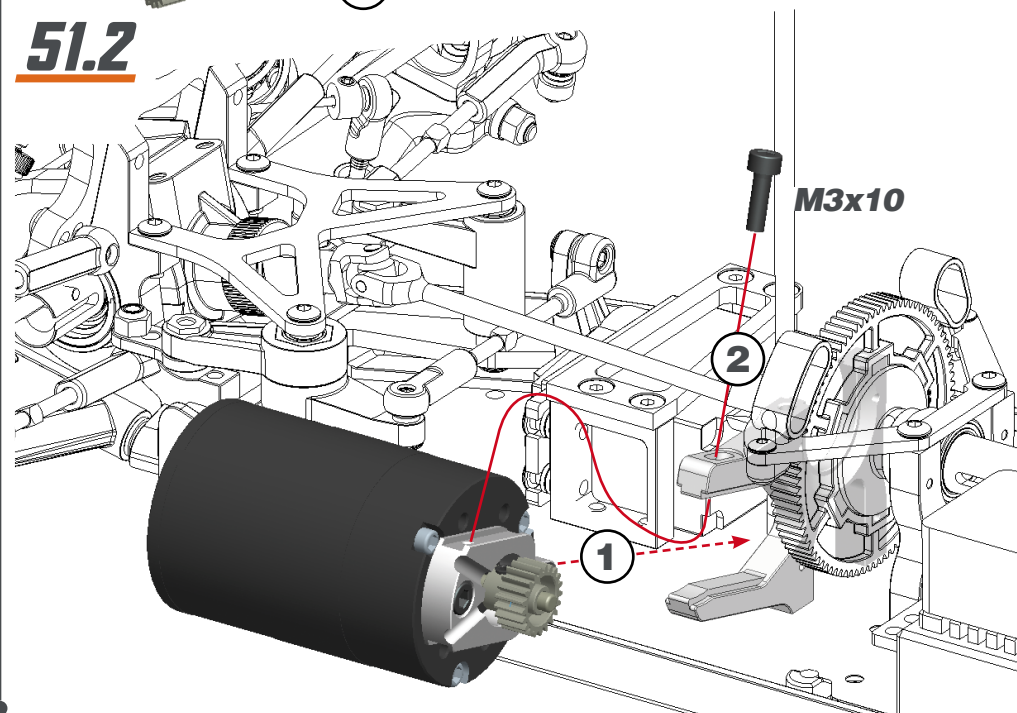
# STEP 51

## 51.1

Pinion is not included in the kit. Assemble the proper pinion for your set-up.



## 51.2



**STEP 52**

