



INSTRUCTION MANUAL
& REFERENCE GUIDE



Welcome to Serpent

The Serpent 747e is based on the successful 747 gaspowered car, combining ultimate performance into a single package. The 200mm wide electric powered racing car offers superb handling, and the durability of a stronger 200mm car.

The Serpent 747e is designed to be a world champion, while still being easy to use, assemble, and set up. You are now part of the worldwide network of Serpent drivers, which gives you superior technical support and access to many benefits that only Serpent drivers can enjoy.

The Serpent 747e offers state of the art specifications and leads the way in 200mm chassis design, using all the knowledge we have from 1/8 scale racing into this design too. Continuously pushing the performance envelope, Serpent's engineers have added many new and innovative features that can help take your Serpent 747 into the winner's circle: new geometry, roll-centers and weight balance, combined with new open and very accessible design.

INSTRUCTIONS

Serpent's long tradition of excellence extends to their instruction manuals, and this instruction manual is no exception. The easy-to-follow layout is richly illustrated with 3D-rendered full-color images to make your building experience quick and easy. Following the instructions will result in a well-built, high-performance racecar that will soon be able to unleash its full potential at the racetrack.

SAFETY

Read and take note of the 'Read this First section' before proceeding to assemble the car-kit. This car-kit is intended for persons aged 16 or older.

CUSTOMER SERVICE

Serpent has made a strong effort to make this manual as complete and clear as possible.

Additional info may be published in our website: www.serpent.com or you may ask your dealer or the Serpent distributor for advice, or email Serpent direct: info@serpent.com

The Serpent Facebook, Twitter and Youtube pages give additional means of support and communications.

INSTRUCTIONS, HOW TO USE

The kit includes bags, with bagnumbers, which refer to the same step in the manual. Open only the indicated bag(s) per step and finish that part of the assembly.

This instruction manual has been divided into sections that will logically lead you through the assembly process of your Serpent 747e. Follow the assembly steps in the order presented to ensure that no problems occur during assembly. Each step indicates all the fasteners and small parts used. Bag numbers identify the kit bag(s) that contains the appropriate parts.

EXPLODED VIEWS AND PARTS LIST

The exploded views and parts lists for the Serpent 747e are included in the back of this manual. The exploded views show all the parts of a particular assembly step along with the Serpent part number. The parts lists indicate the part number and name of each part for easy reference when ordering.

All information about the Serpent 747e is accessible from the Serpent 747 product page which can be found on Serpent.com and can be accessed by simply typing www.serpent.com/804006 into your web browsers address bar.

From the Serpent 747e product page you will find the very latest information about your 747e: reports by team drivers and other experts, tips and tricks, setups, image gallery and downloadable files including the latest version of the instruction manual will be made available as downloadable PDF-files.

Enjoy racing !

Team Serpent

Remaining parts will be needed lateron in the assembly process.

SETUP

In many assembly steps you mount specific parts that suit the default set-up. We advice to keep the seperate default set-up sheet alongside the manual, during all assembly.

Other finetuning of the set-up, must be done at the track.

CONTENTS

FRONT ASSEMBLY	4
REAR ASSEMBLY	9
BALL DIFF ASSEMBLY	10
TRANSMISSION ASSEMBLY	11
SHOCKS ASSEMBLY	14
FINAL ASSEMBLY	17
REFERENCE GUIDE	18
PARTS LISTS	26

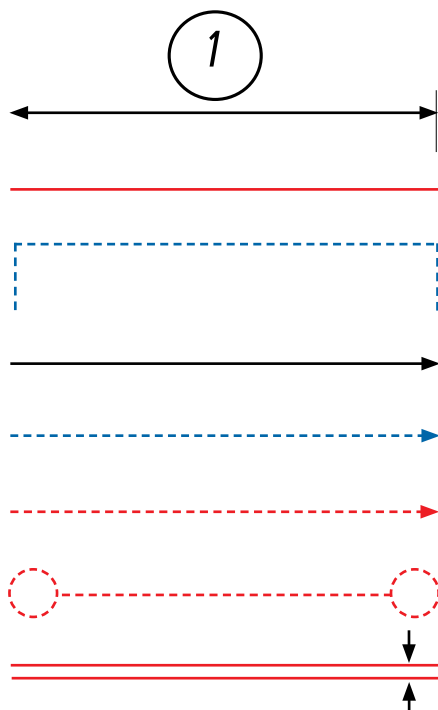
Read this first!

- This is a highly technical hobby product, intended to be used in a safe racing environment. This car is capable of speeds in excess of 80 km/h or 50mph. Please follow these guidelines when building and operating this model.
- Parental guidance is required when the builder/user of this car is under 16.
- Follow the building instructions. If in doubt, contact your dealer or importer.
- Be sure to use the proper tools when assembling the car. Always exercise caution when using electric tools, knives and other sharp objects.
- Be careful when using liquids like lubrication oil, fuel or glue. Do not swallow.
- Follow the manufacturer's instruction in case you experience irritation after using the product.
- Be careful when operating the car. Stay away from any rotating parts such as wheels, gears and transmission. Stay away from motor, engine and exhaust pipe system or speedo during and immediately after use, as these parts may be very hot. We advise to use protective hand gloves.
- Only operate this car in a safe environment, like a special racing track or a closed parking lot. Avoid using

- this car on public roads, crowded places or near infants.
- Before operating this car, always check the mechanical status of the car. Also check that the transmitter and receiver frequencies correspond and are not used by any other racer at the same time. Check that the batteries of the transmitter and receiver are fully charged.
- After use, always check all the mechanics of the car. We advise to clean the car immediately after use, and inspect the parts for wear or fractures. Replace when necessary. Do not use water, methanol, thinner or other solvents to clean the car.
- Empty the fuel tank (depending on model) if needed and disconnect the receiver battery.
- Store the car in a dry and heated place to avoid corrosion of metal parts.
- Avoid using this car in wet conditions as the water will cause corrosion on the metal parts and bearings and these parts will cease to function properly. If driven in the wet, ensure that all the electric equipment is waterproofed and after use, that all moving parts are dried immediately.

USING THE MANUAL

Each step contains a variety of numbers, lines, and symbols. The numbers represent the order in which the parts should be assembled. The lines and symbols are described below.



Step number; the order in which you should assemble the indicated parts

Length after assembly

Assembly path of one item into another

Group of items (within lines) should be assembled first

Direction the item should be moved

Glue one item to another

Press/Insert one item into another

Connect one item to another

Gap between two items



Apply graphite grease (Grey),



Apply threadlock (Blue),



Apply silicone grease (Orange),



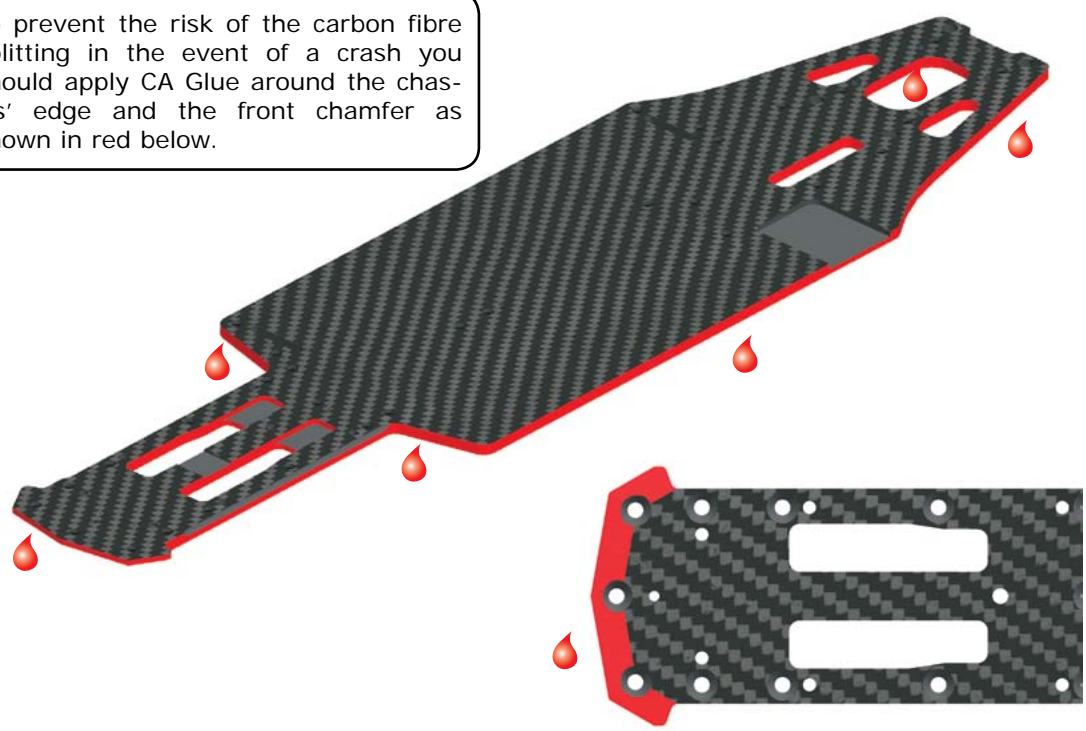
Apply silicone oil,

🔥 CA Glue

STEP
1

To prevent the risk of the carbon fibre splitting in the event of a crash you should apply CA Glue around the chassis' edge and the front chamfer as shown in red below.

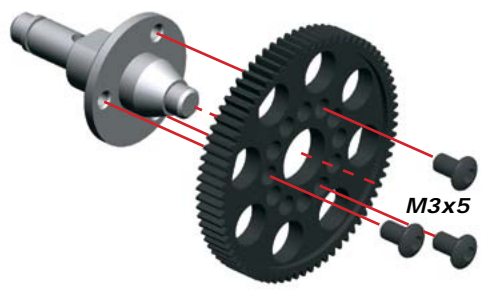
KIT



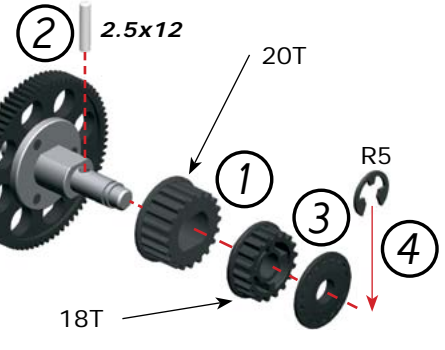
TRANSMISSION ASSEMBLY

STEP
2

2.1

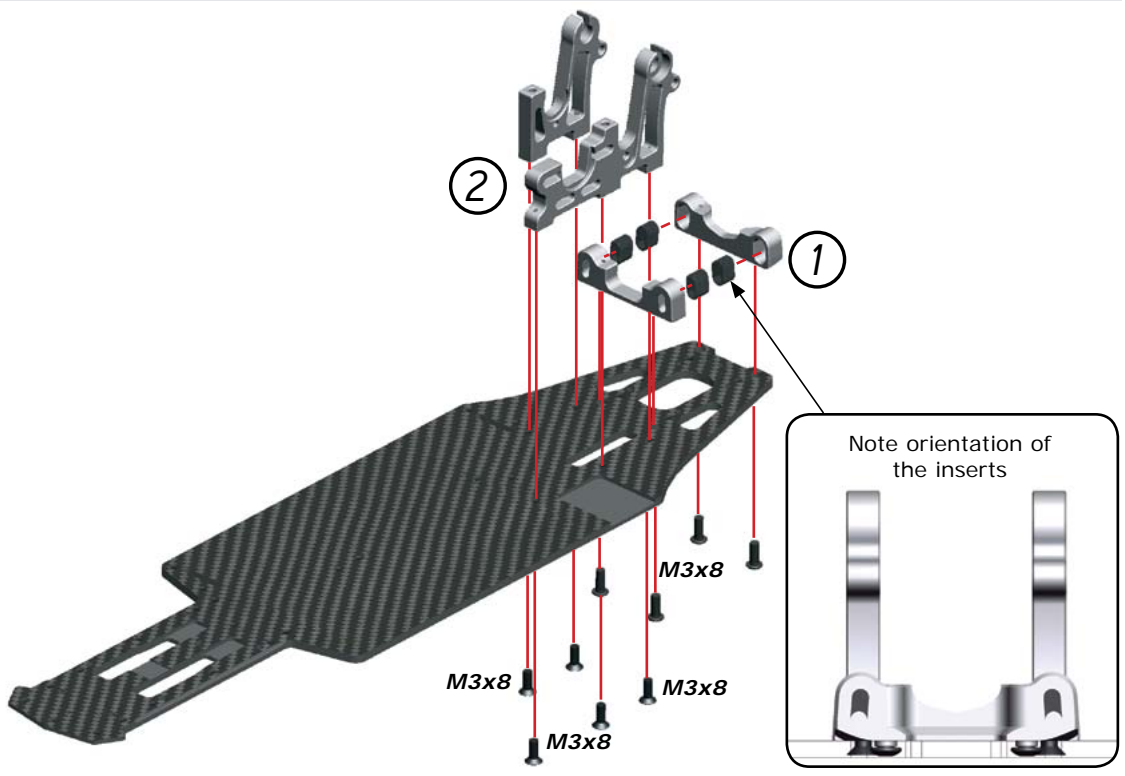


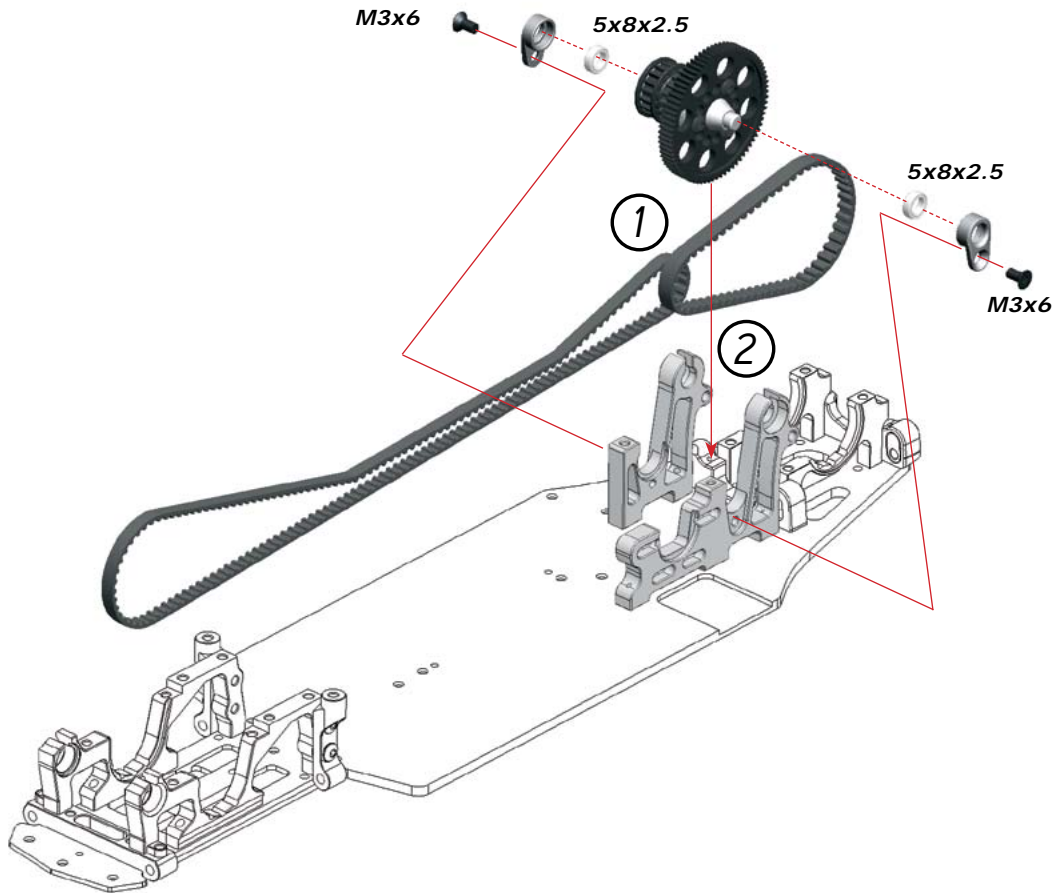
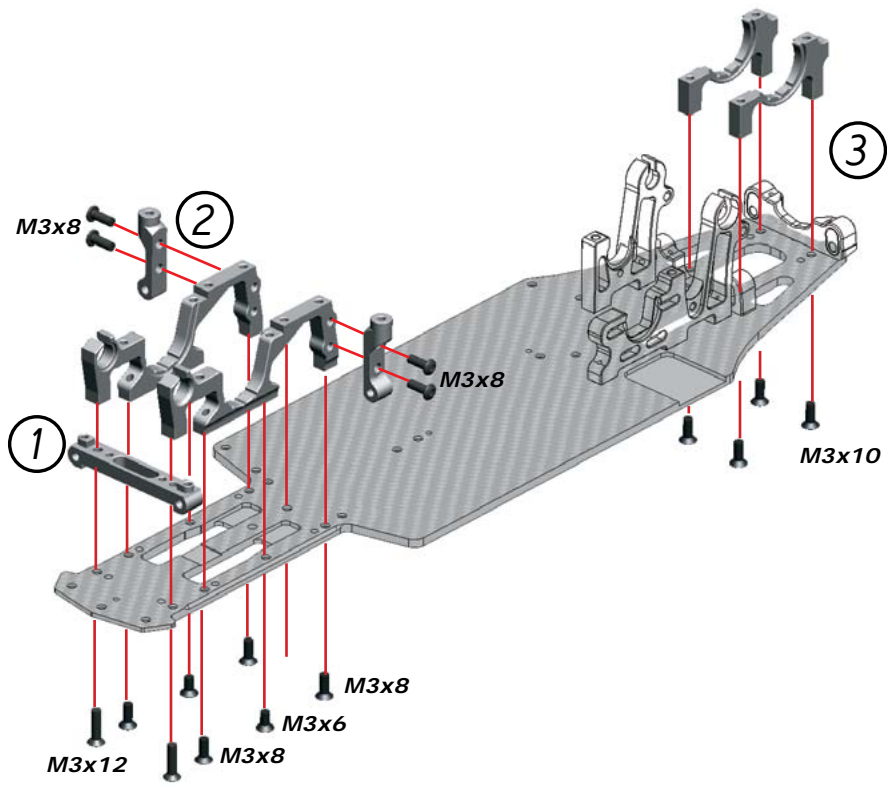
2.2



Bag
1

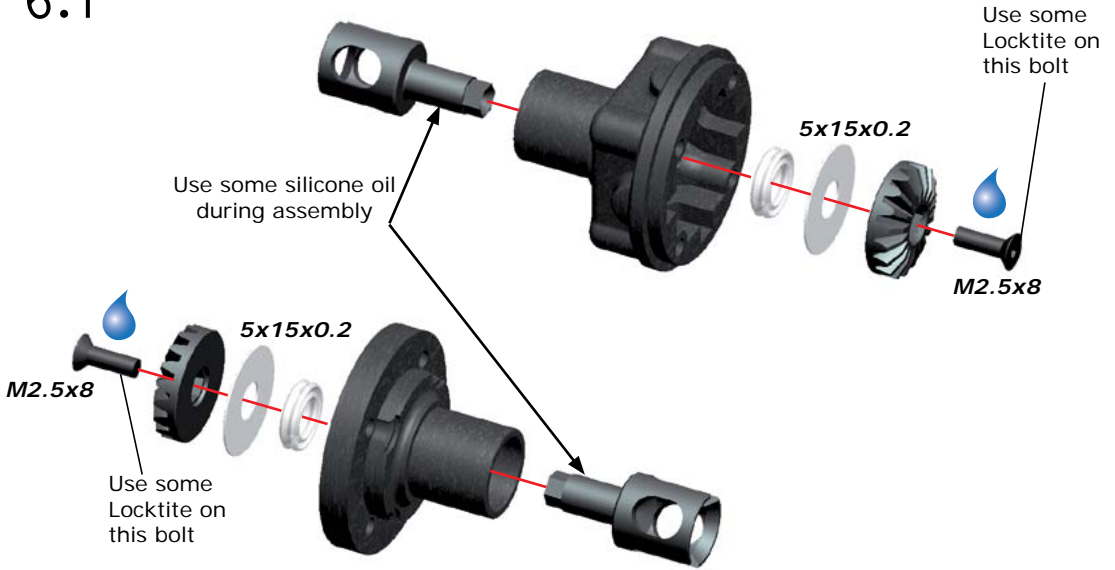
STEP
3





DIFFERENTIAL ASSEMBLY

6.1



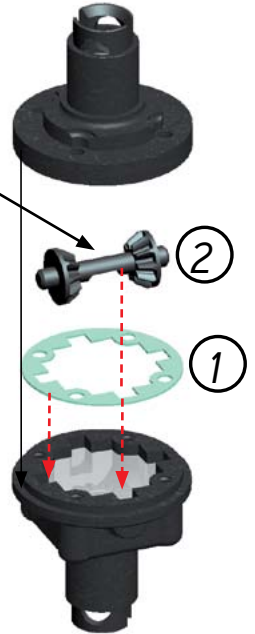
6.2

Fill the diff case with silicone oil till the level showed in the picture.



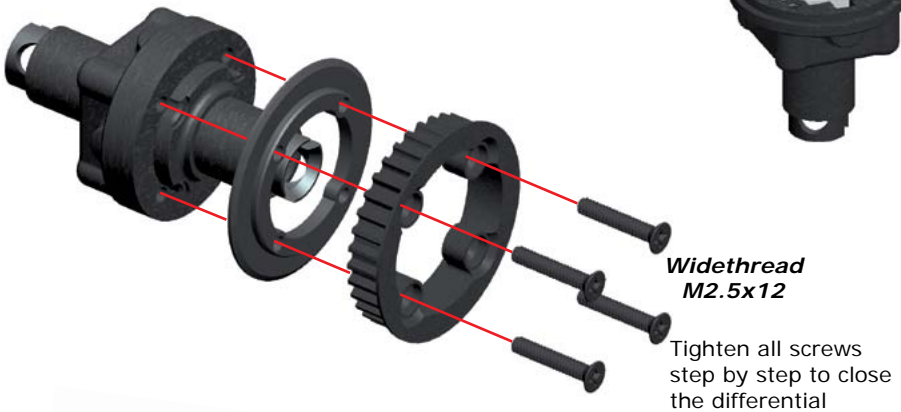
6.3

Depending on set-up you can choose for 2 or 4 gears. Check set-up



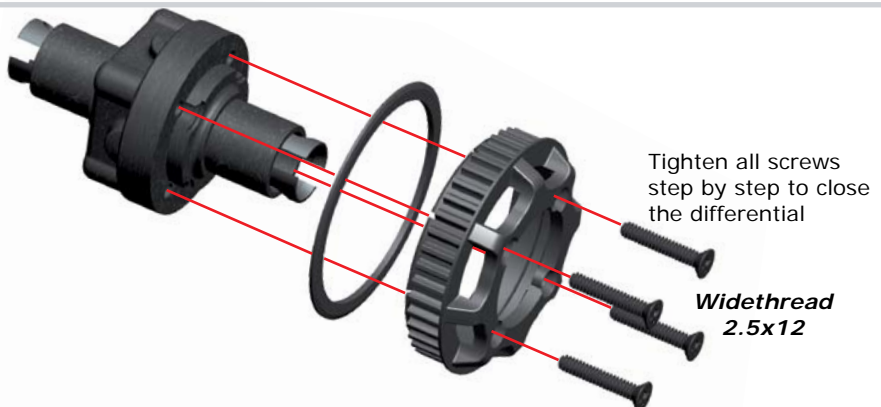
6.4

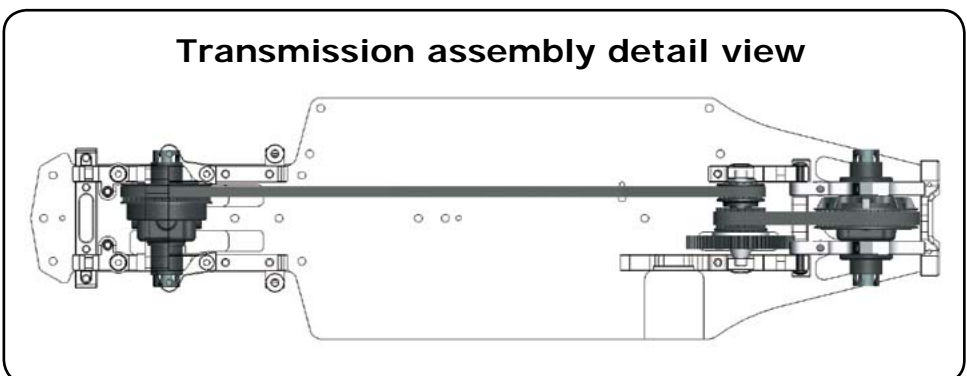
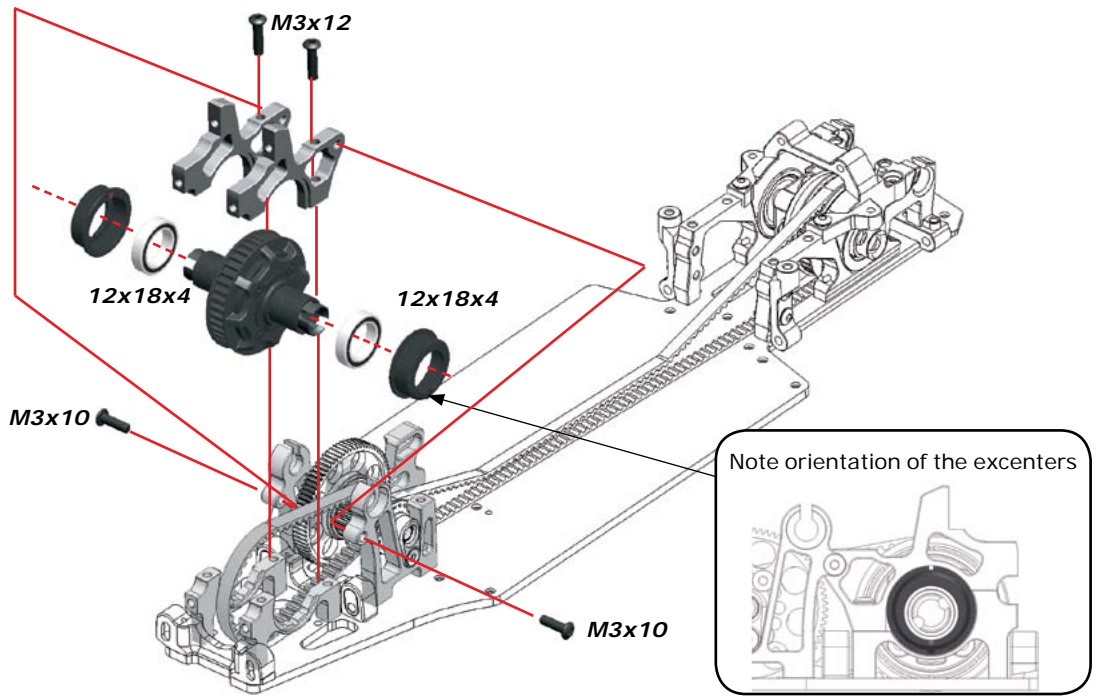
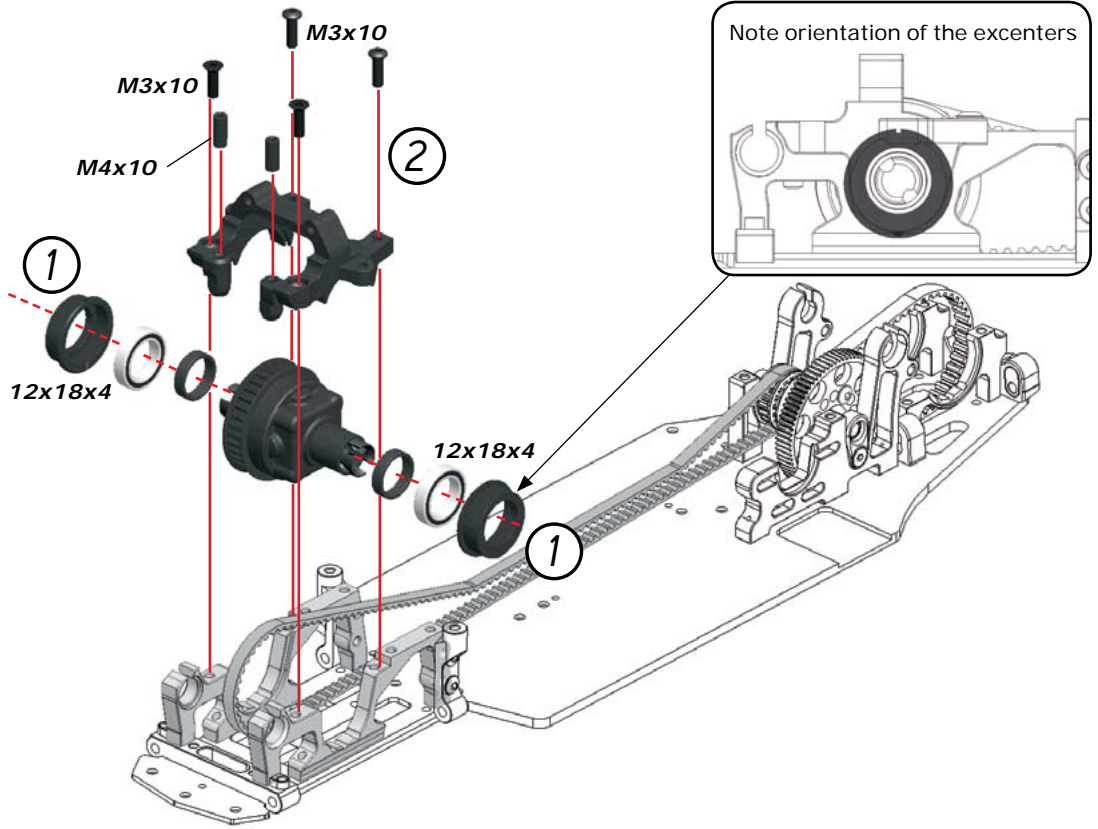
FRONT DIFF



6.5

REAR DIFF



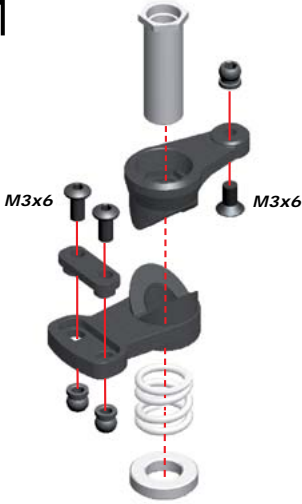


STEERING ASSEMBLY

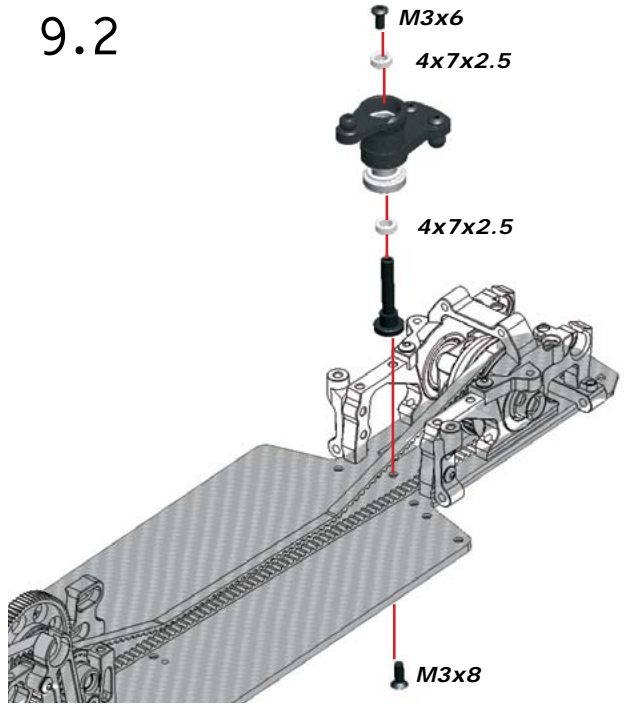
STEP
9

Bag
4

9.1

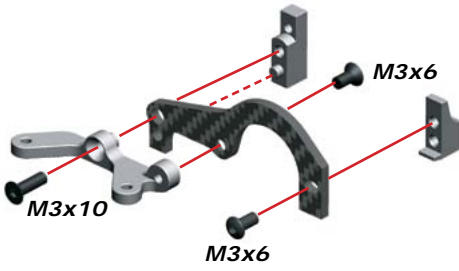


9.2

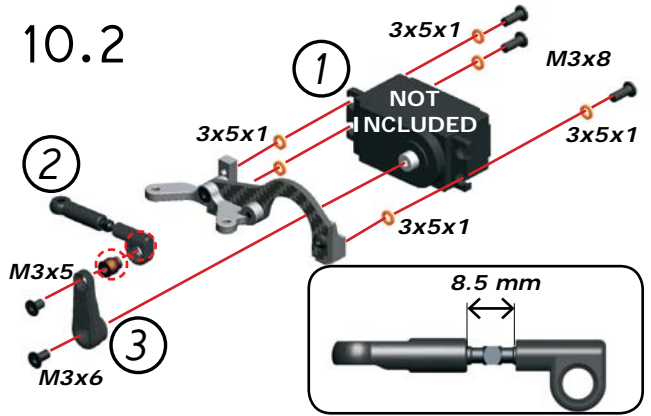


STEP
10

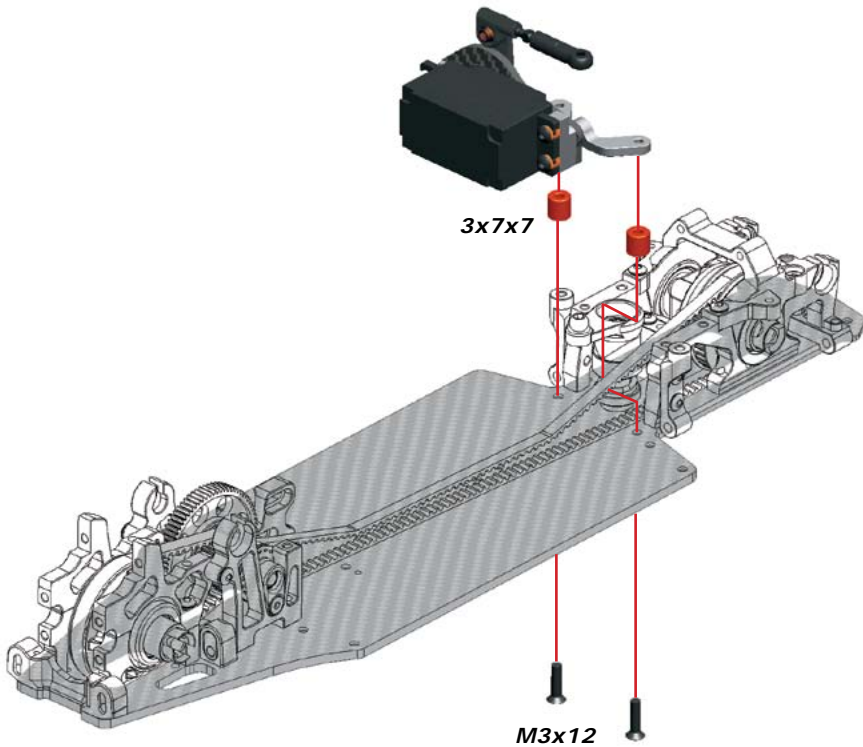
10.1



10.2



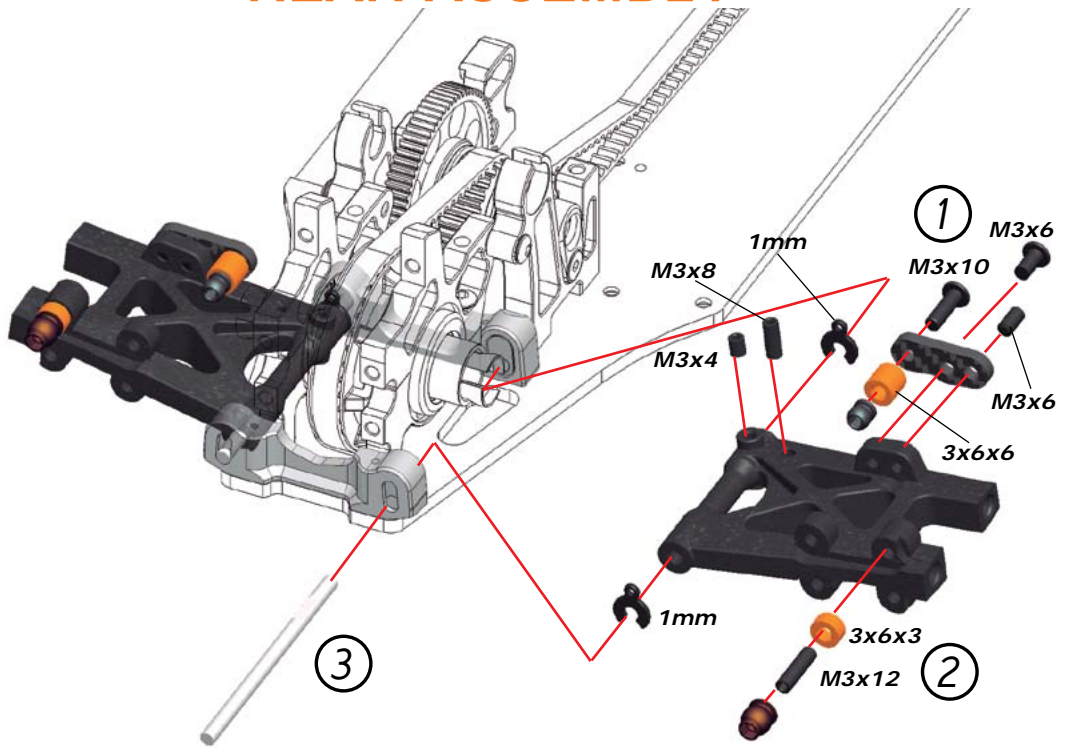
10.3



REAR ASSEMBLY

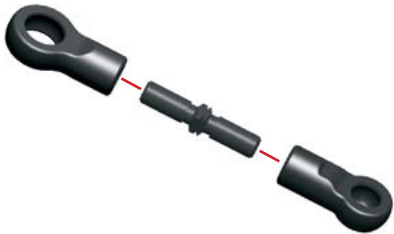
STEP
11

Bag
5

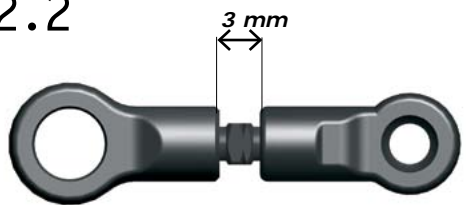


STEP
12

12.1

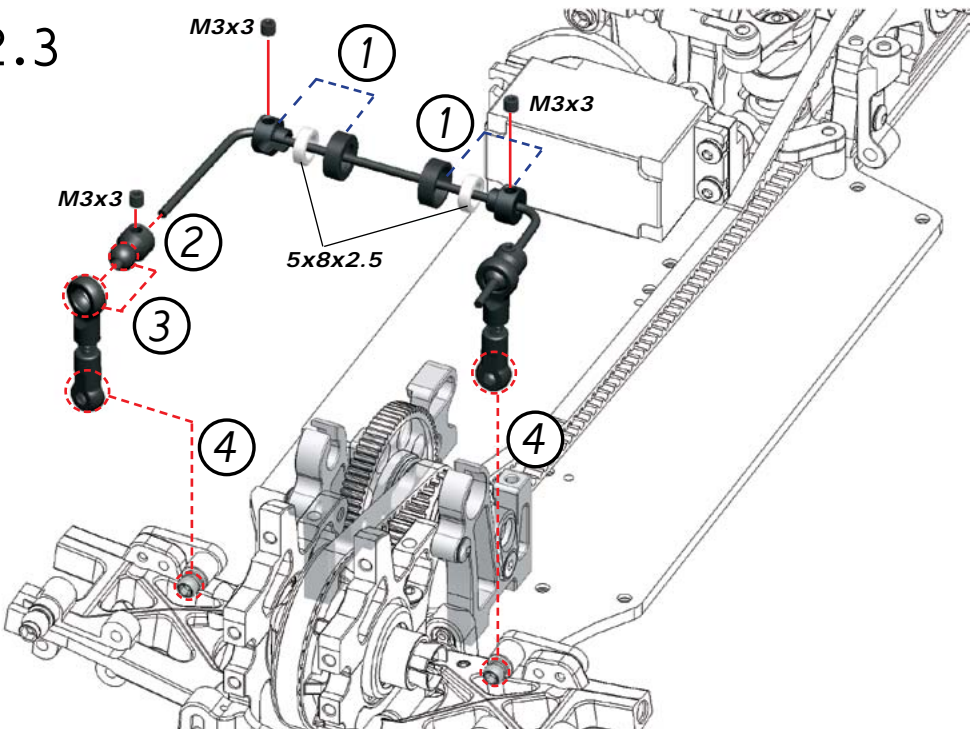


12.2

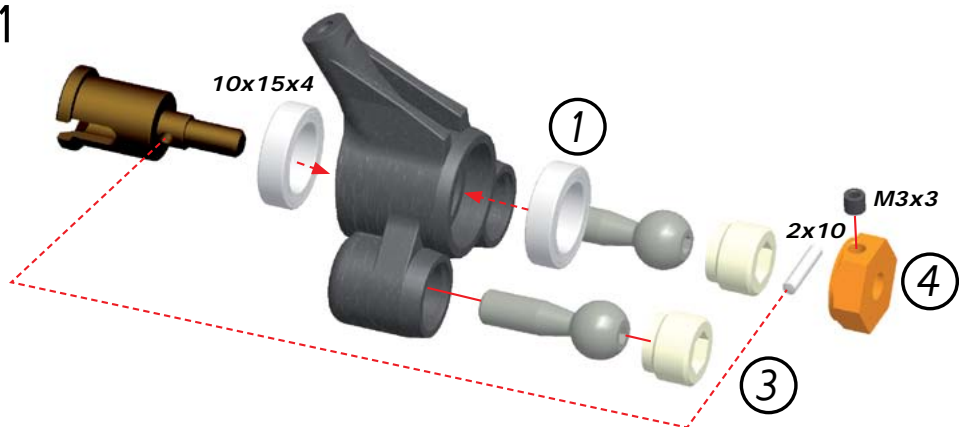


Note: Cut 8 mm each extreme of the rear anti-roll bar before asseling it.

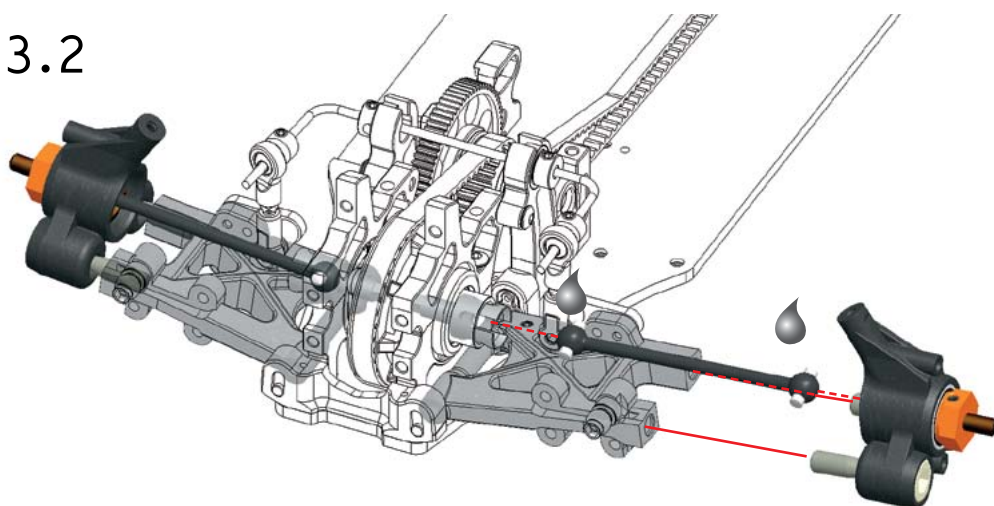
12.3



13.1



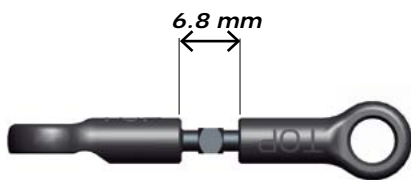
13.2



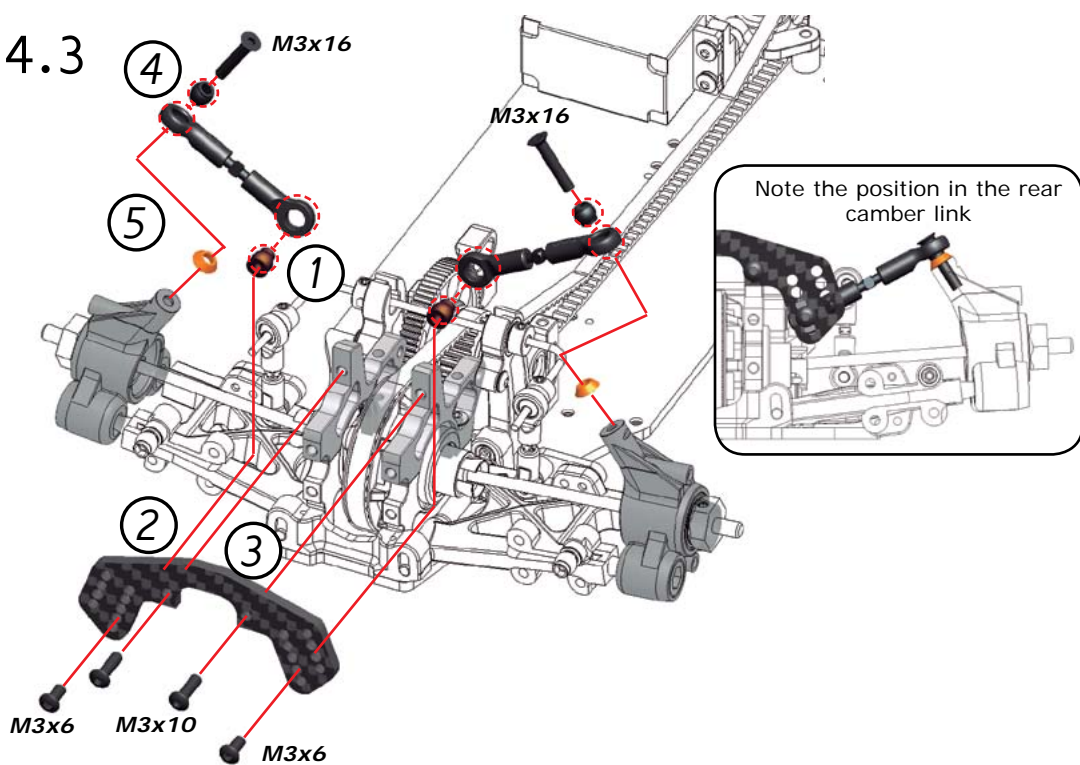
14.1

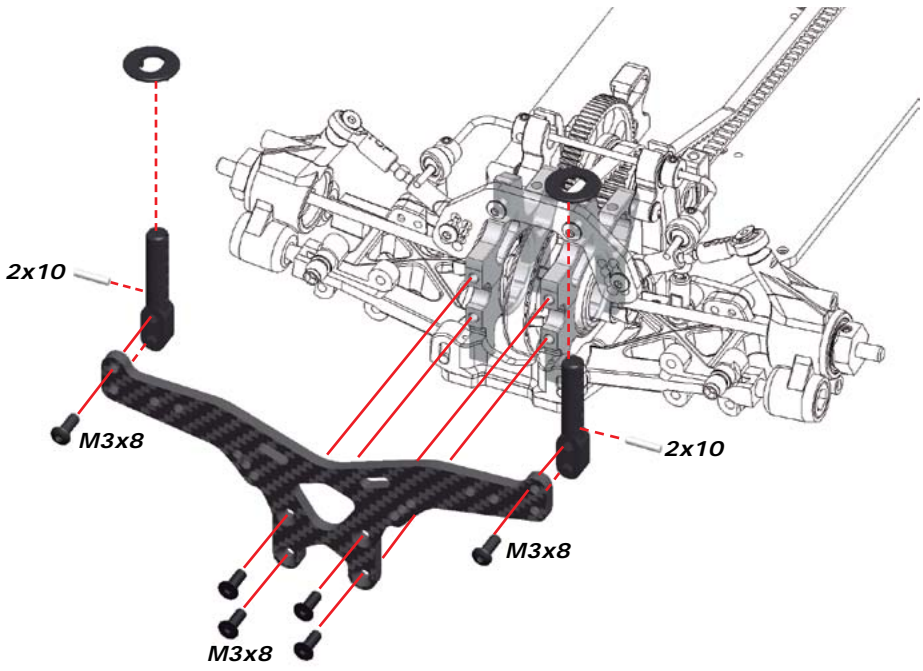


14.2

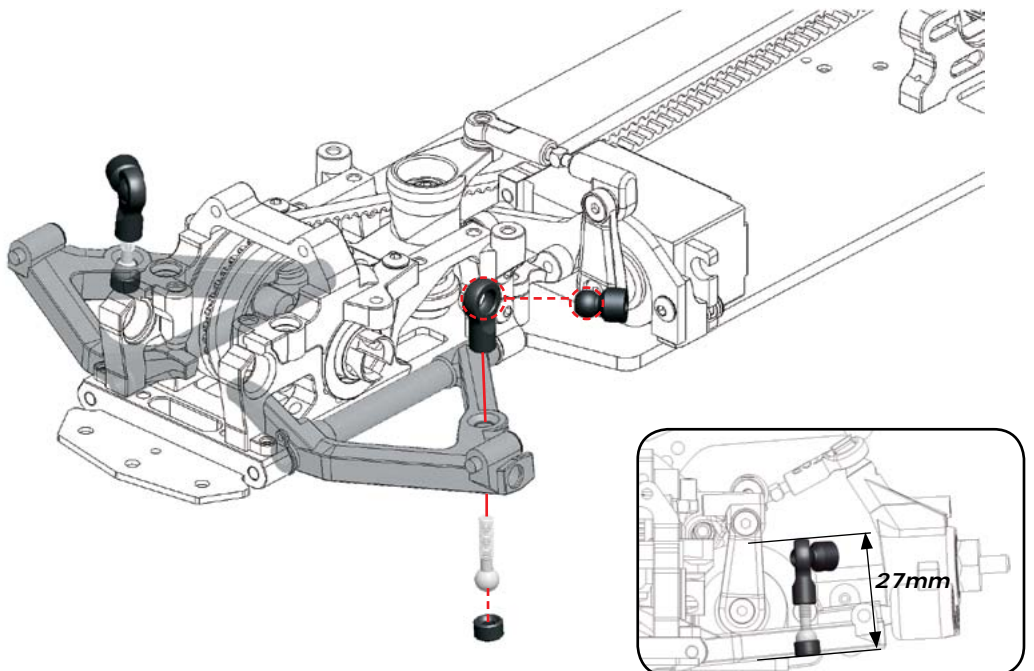
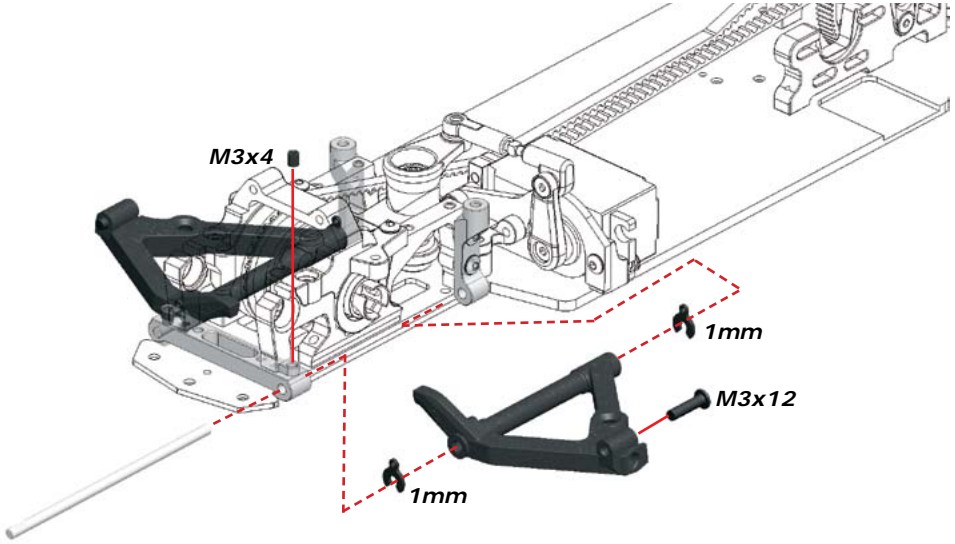


14.3

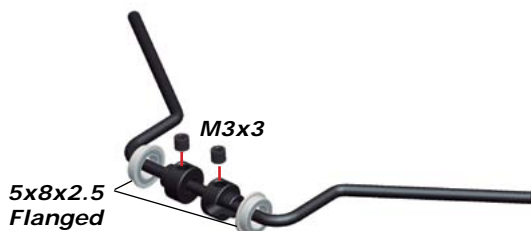




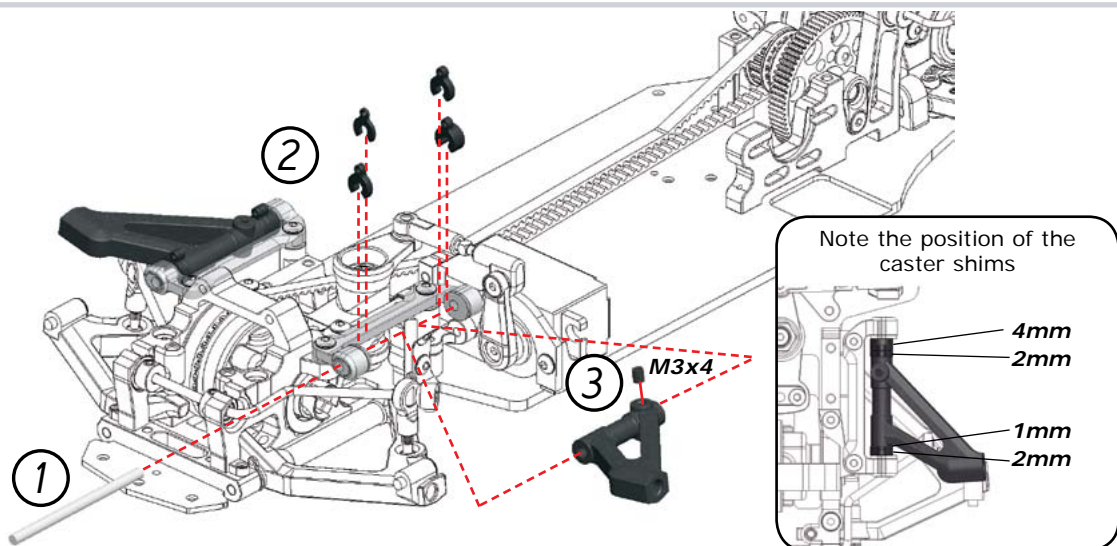
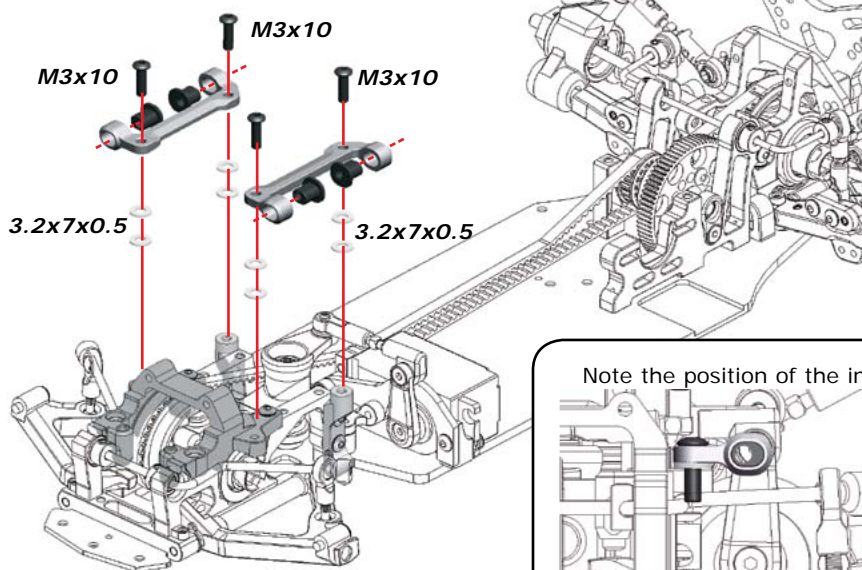
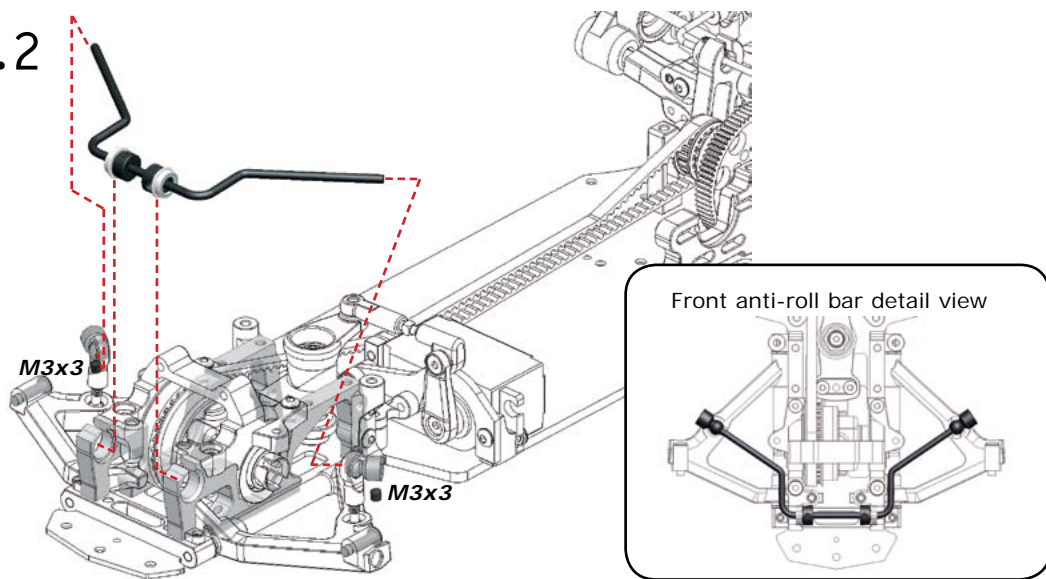
FRONT ASSEMBLY



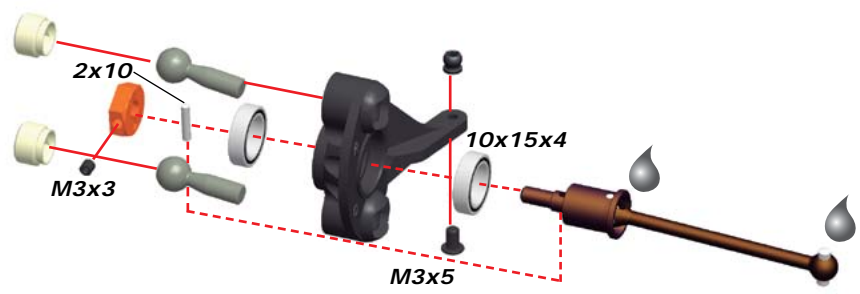
18.1



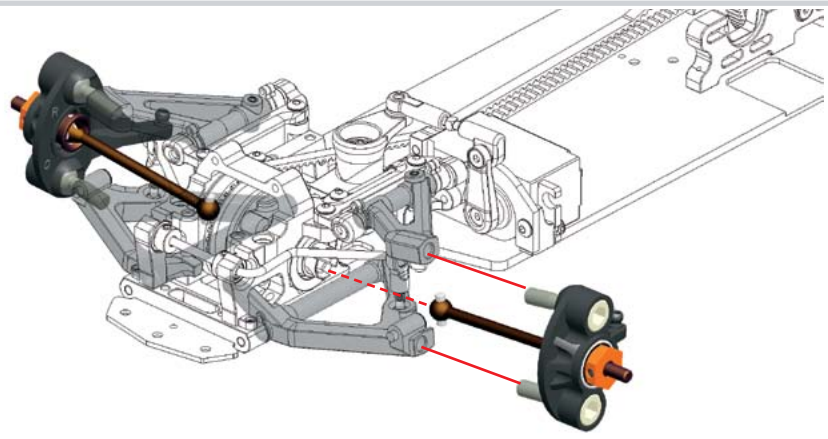
18.2



21.1



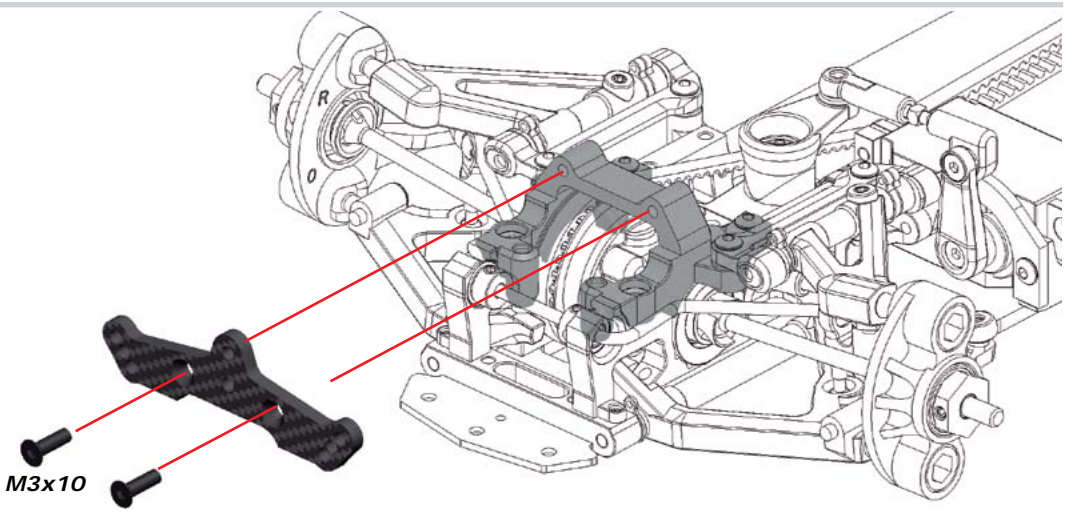
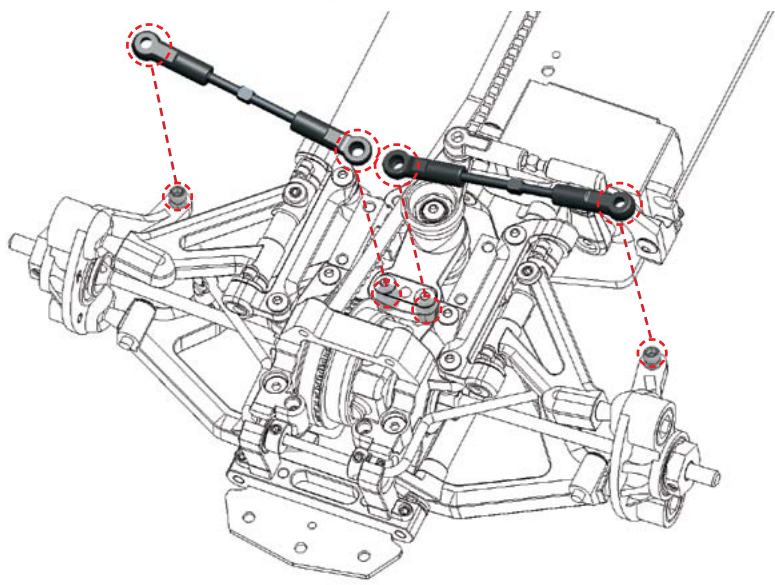
21.2



22.1

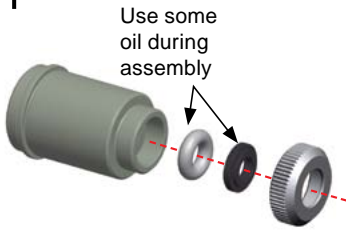


22.2

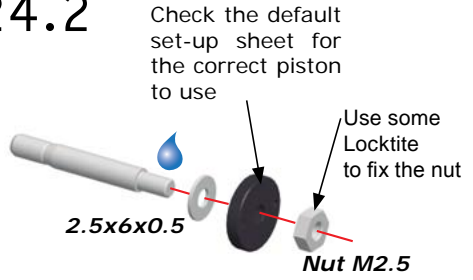


RCM SHOCK ASSEMBLY

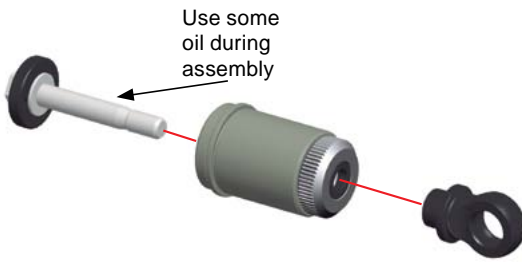
24.1



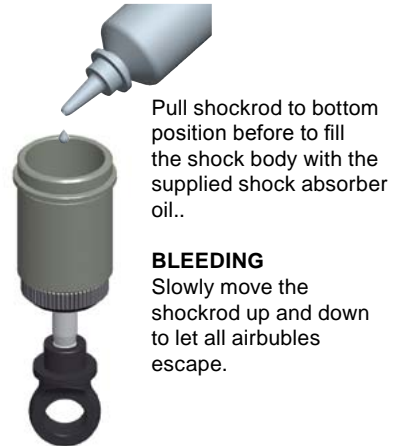
24.2



24.3



24.4



24.5

Close the top of the shock

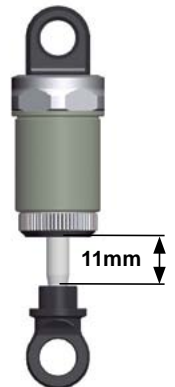


After assembly ensure you can push the piston all the way in (top of balljoint should hit the shock-bottom). If not, re-open the shock and let some oil bleed out, and repeat the steps.

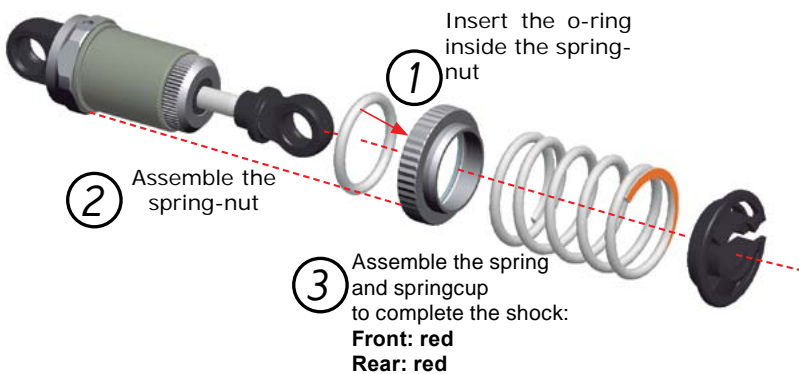
Allow some 'rebound' on the shockshaft, around 4mm is normal.

24.6

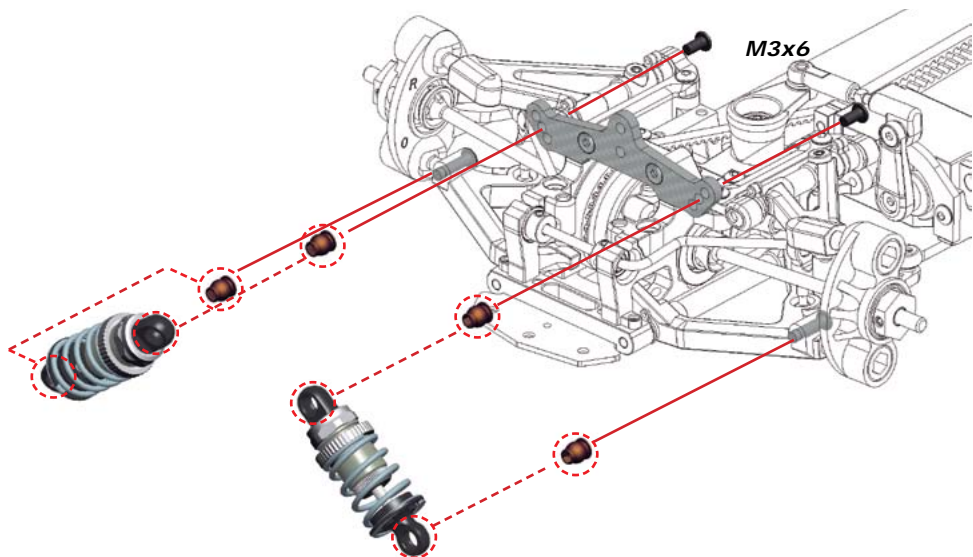
Measure fully extended



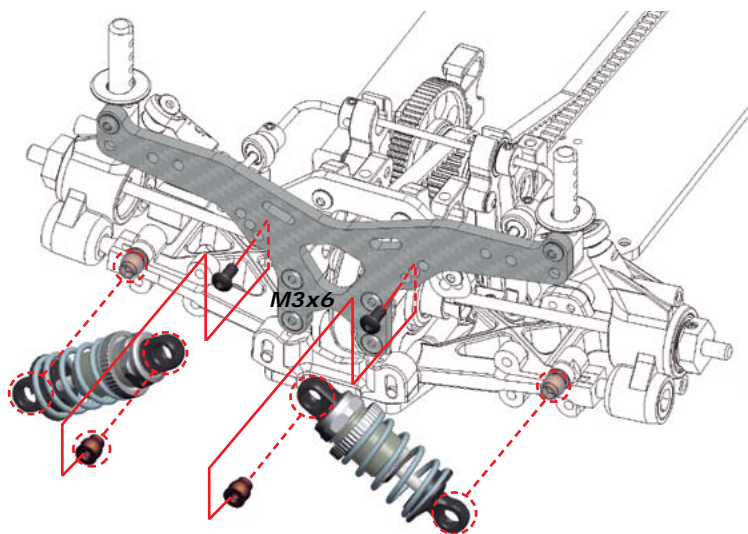
24.7



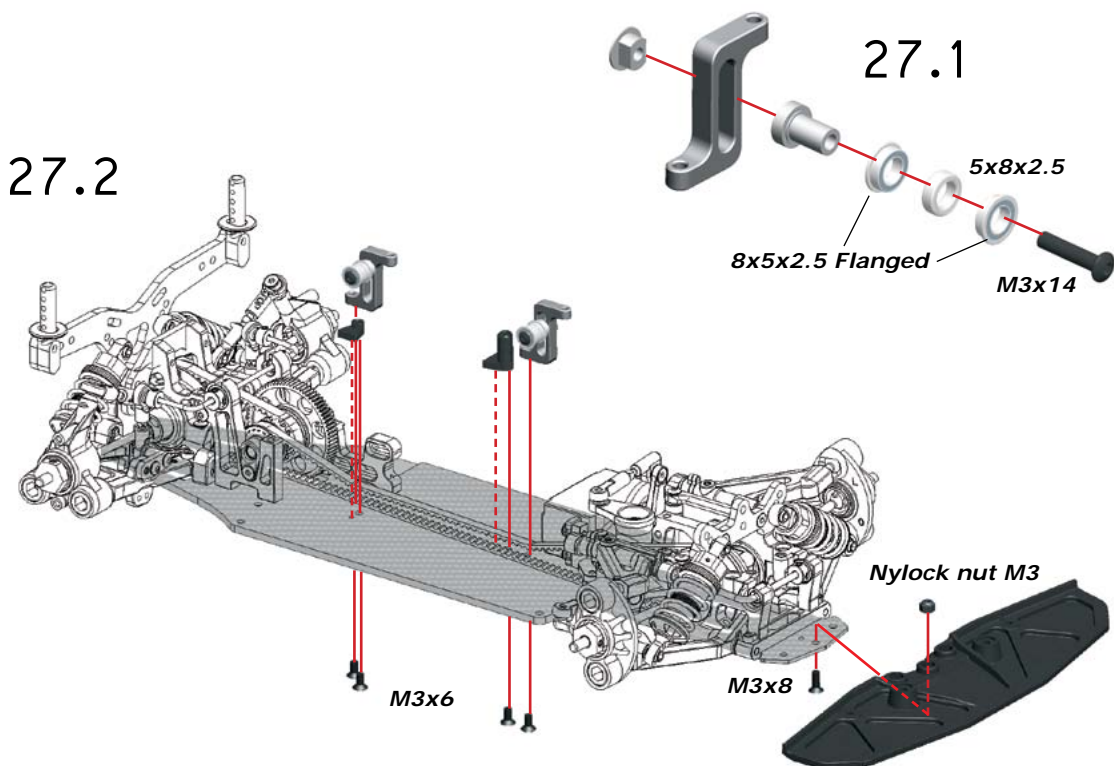
STEP
25



STEP
26



STEP
27



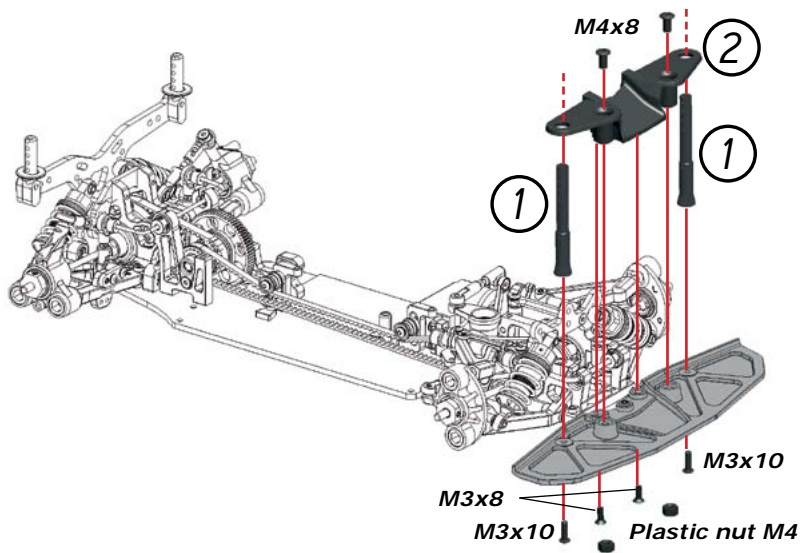
Bag
10

247
ELECTRIC POWERED

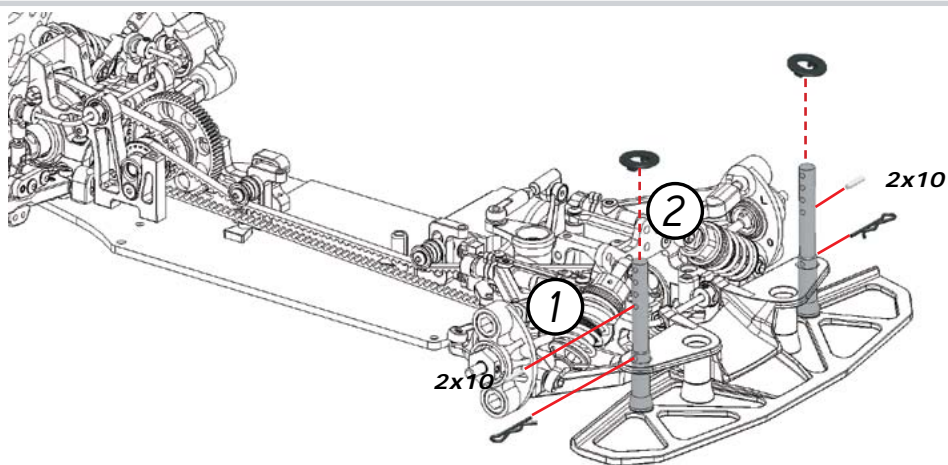
Page

13

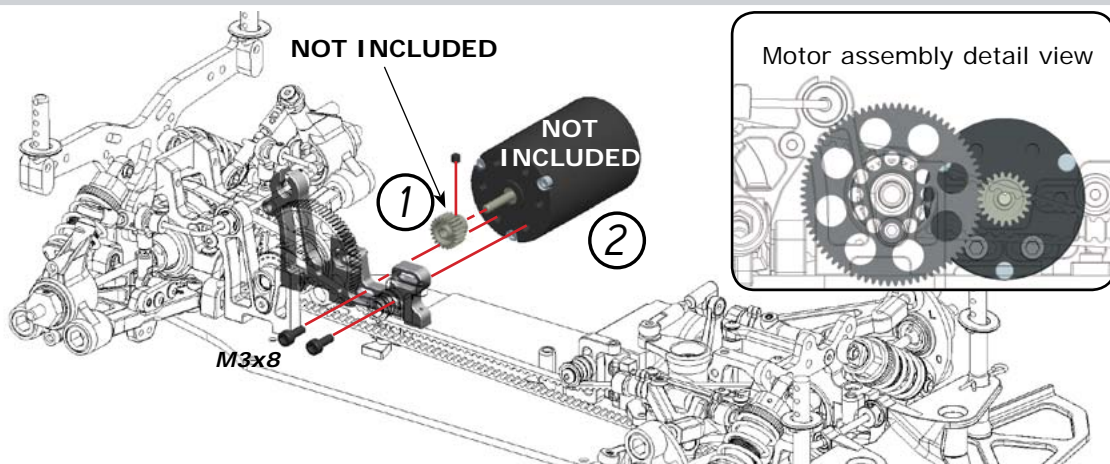
STEP
28



STEP
29

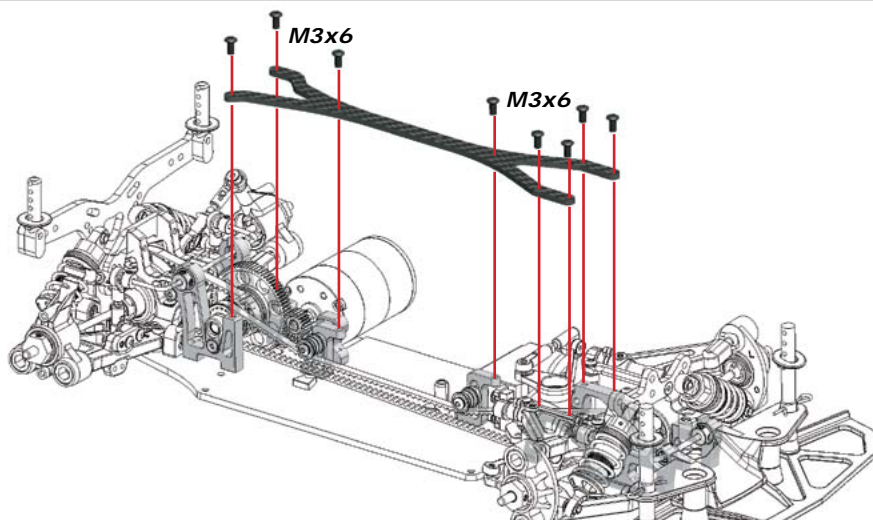


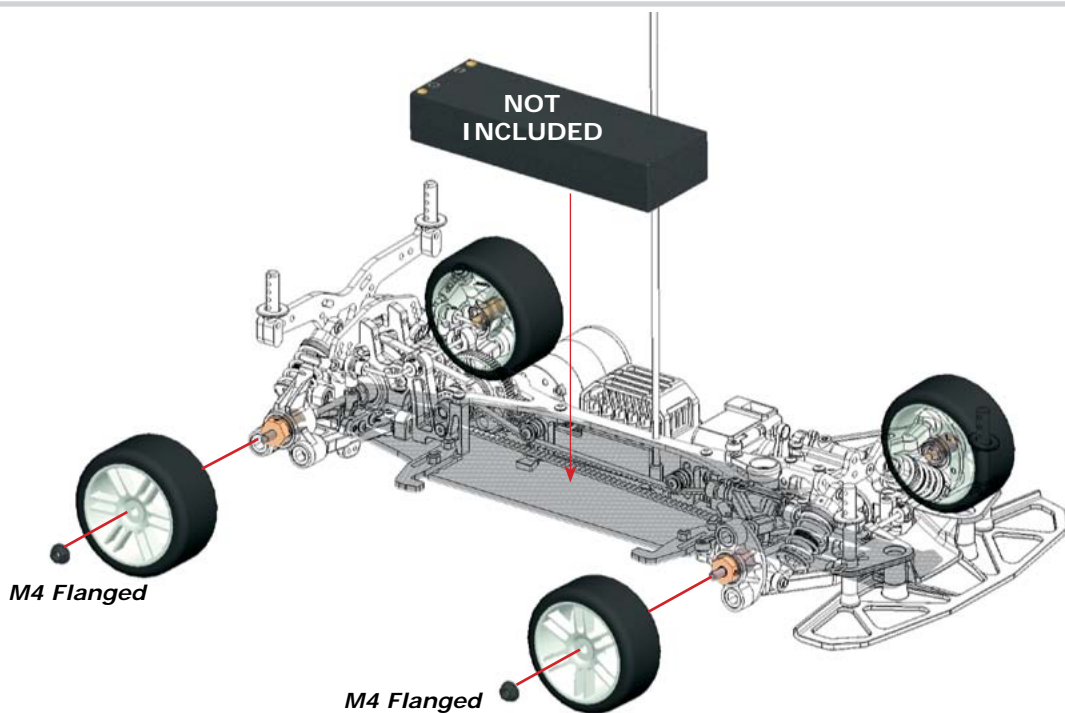
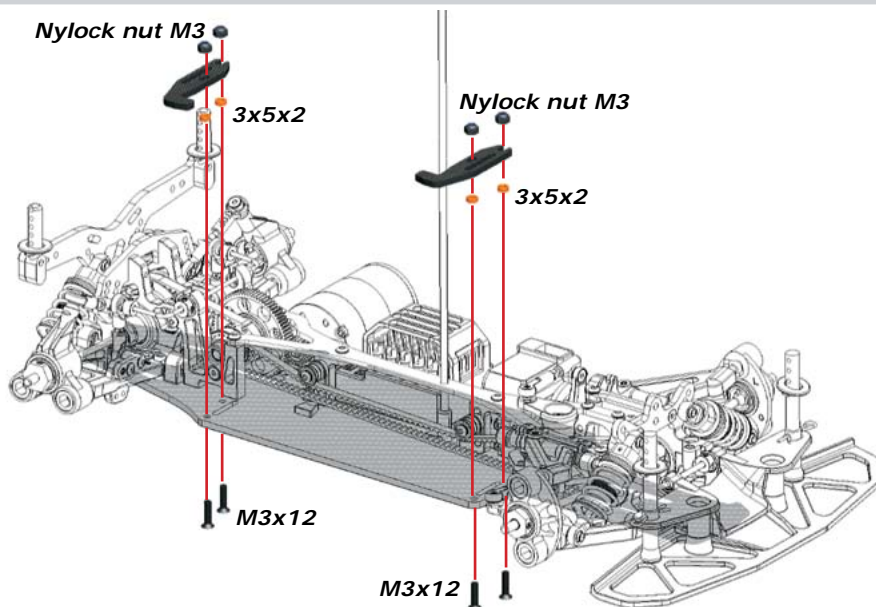
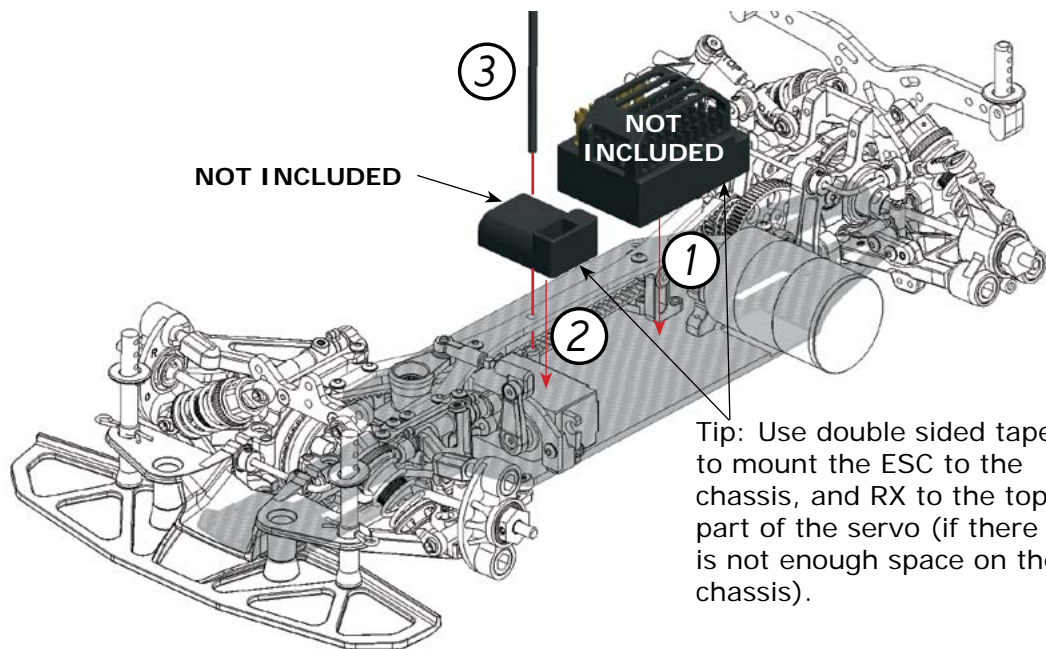
STEP
30



Bag
11

STEP
31





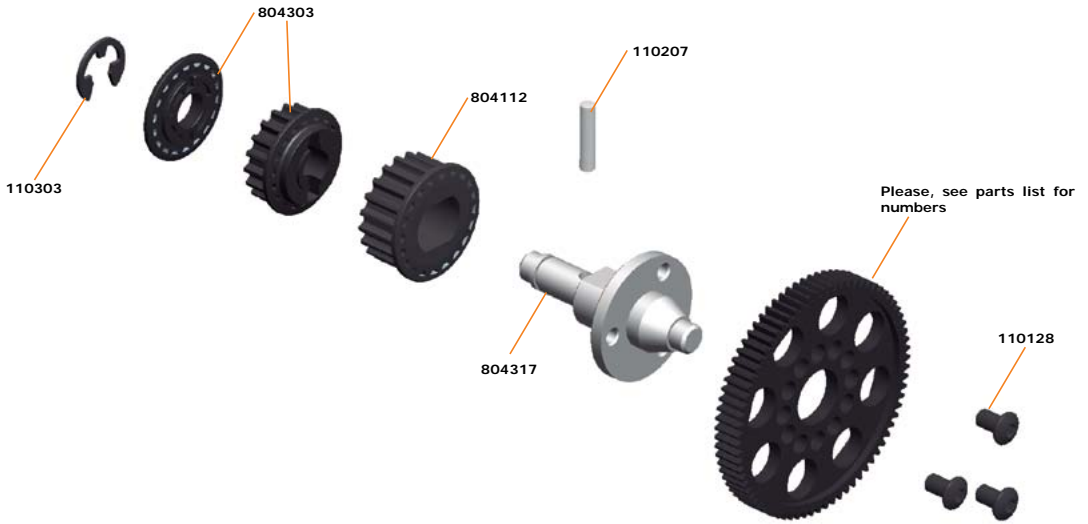
REF GUIDE:

EXPLODED VIEWS and PARTS-LIST

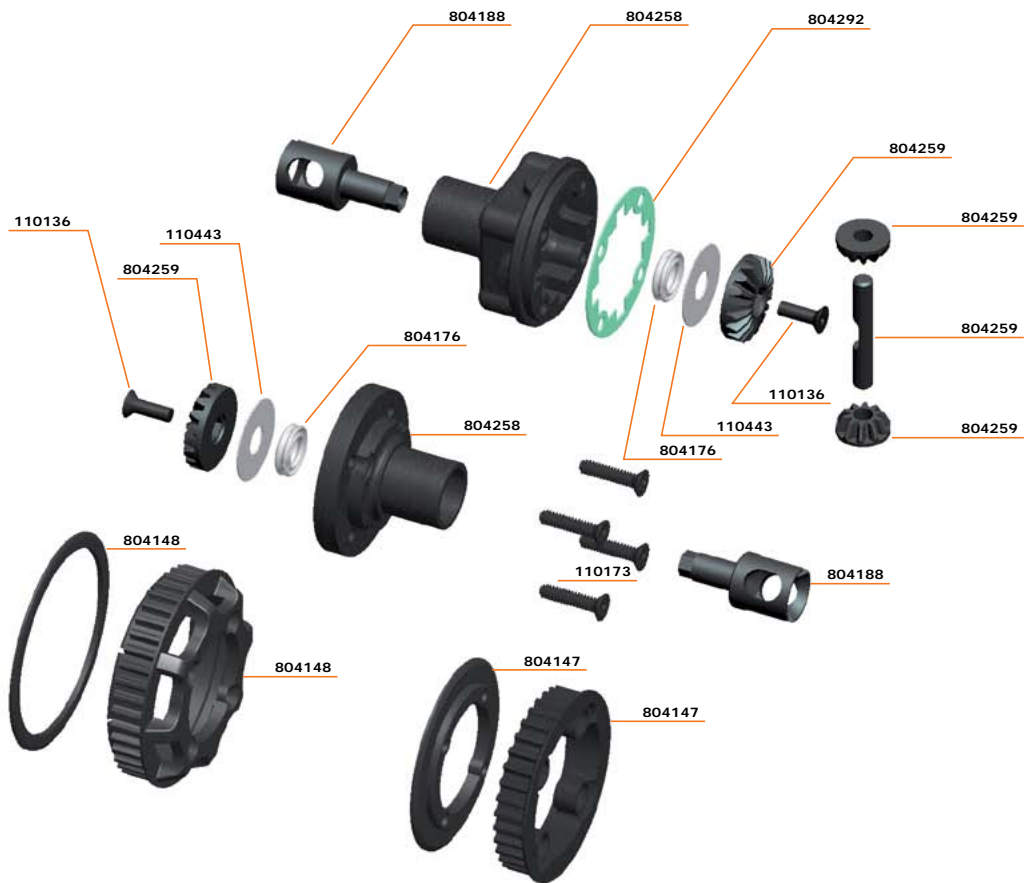
Contents

MID SHAFT ASSEMBLY	16
DIFF ASSEMBLY II	16
TRANSMISSION ASSEMBLY	17
FRONT ASSEMBLY	18
REAR ASSEMBLY	19
SHOCKS ASSEMBLY	20
FINAL ASSEMBLY I	21
FINAL ASSEMBLY II	22
PARTS-LIST	23

MID SHAFT ASSEMBLY

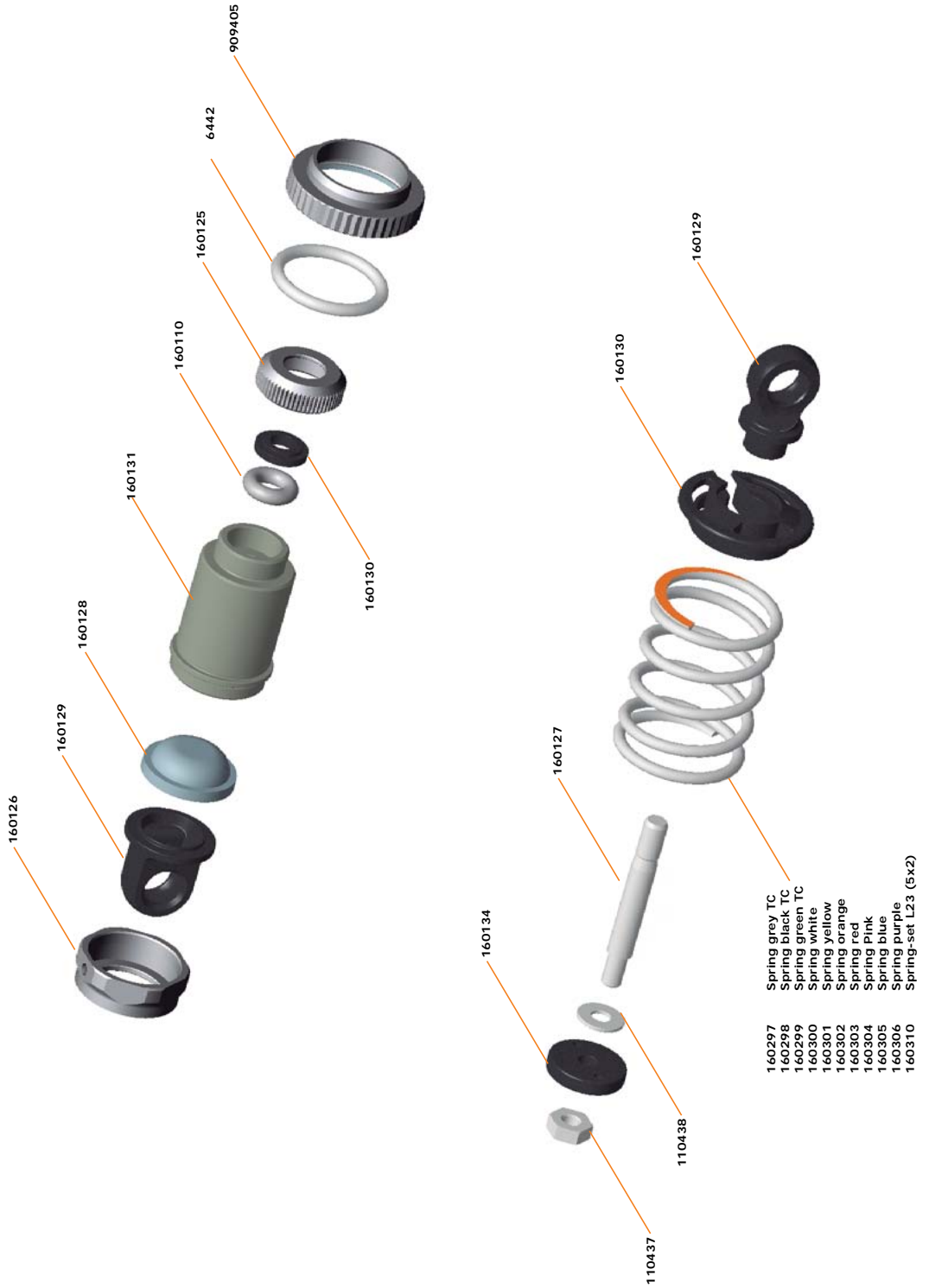


DIFF ASSEMBLY

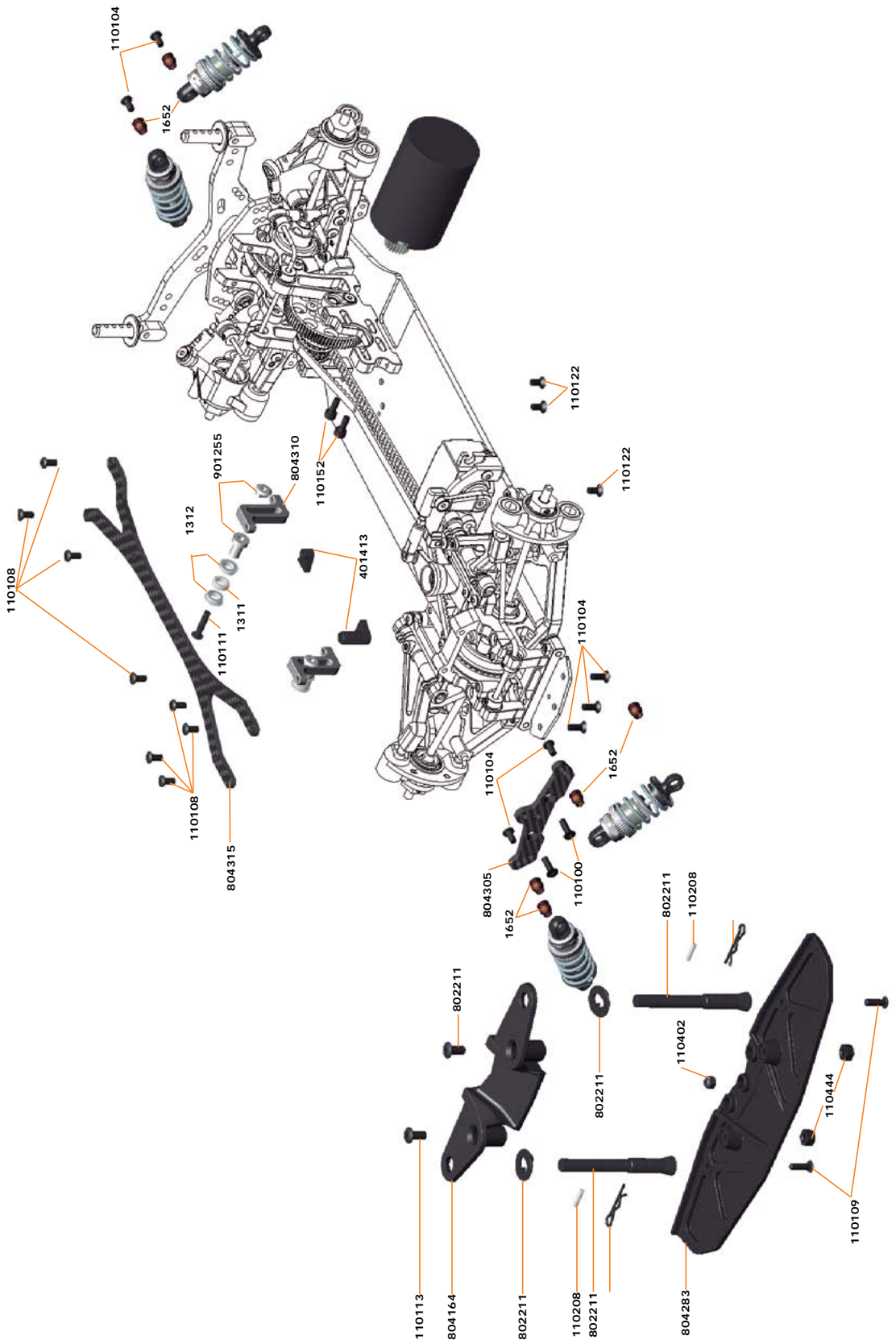


804257 Geardiff uni 1/10 GP
 804259 Geardiff uni 1/10 GP revision set

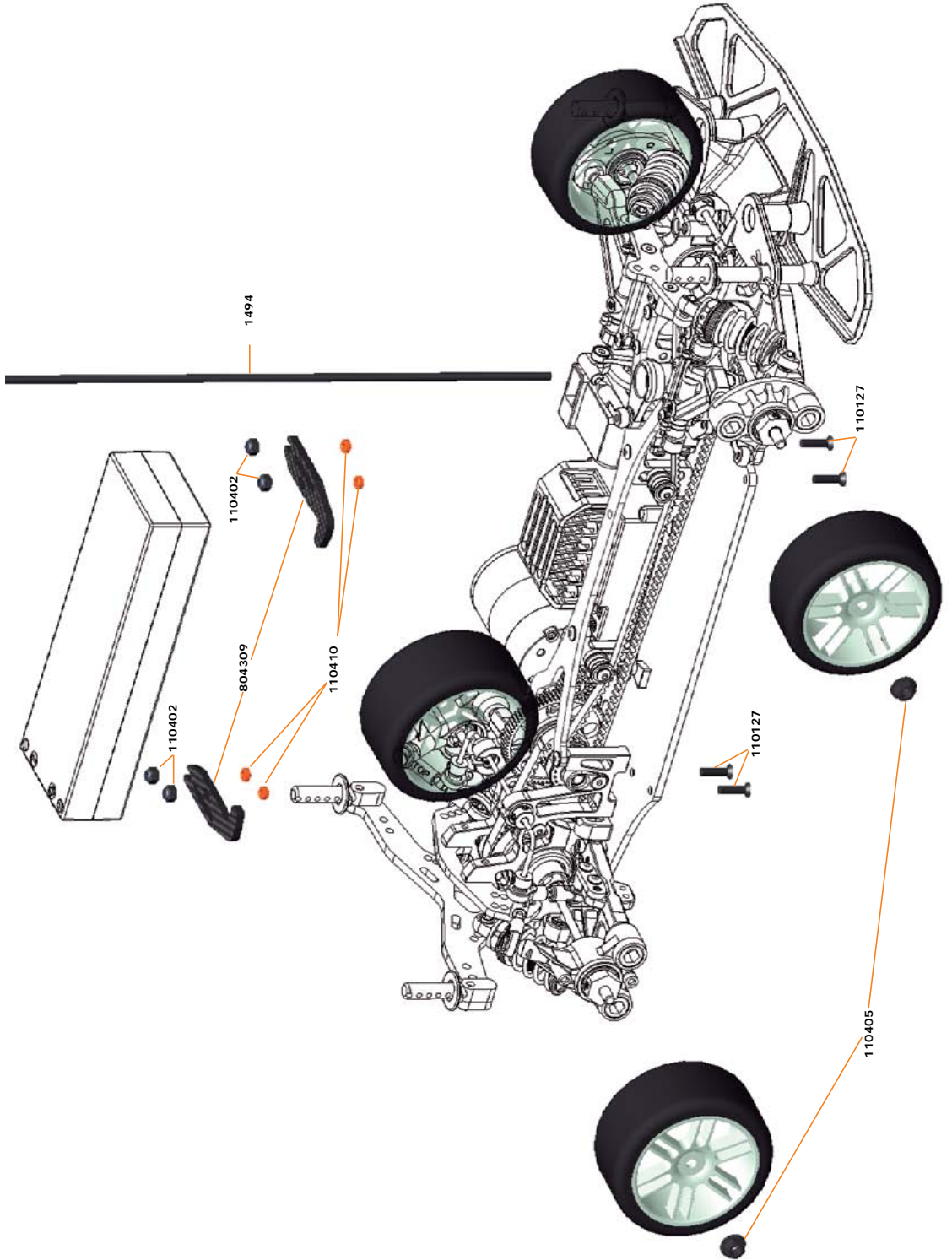
SHOCKS ASSEMBLY



FINAL ASSEMBLY I



FINAL ASSEMBLY II



PARTS-LIST CONVERSION KIT

Part no Description

804006 SERPENT 747E 1/10

MANUAL, DECALS

1886 Decal serpent black/white 1/10 (2)

1888 Decal serpent chrome 1/10 (2)

804297 Decal sheet 747 black/white (2)

804298 Decal sheet 747 chrome (2)

RADIO INSTALLATION / BATTERY

1070 Grommet rubber soft (4)

804154 Servo levers steering (3)

804318 Servomount set 747E

Optionals

804214 Steering lever 23T alu

804215 Steering lever 24T alu

804216 Steering lever 25T alu

SERVO SAVER AND STEERING

1650 Steel balls 5.8mm (4)

1652 Steel balls 5.8mm long (4)

401091 Balljoint-4-5 (12)

411253 Pivotball uni 4.5mm (4)

802260 Track-rod 47mm l+r (2)

804120 Servo saver axle

804124 Servo saver Spring

804130 Servo saver nut

804131 Servo saver shaft

804154 Servo levers steering (3)

804157 Servo saver set nylon

804318 Servomount set 747E

902138 Rod 23mm set (2)

903231 Balljoint set 14+6+2

Optionals

401500 Pivotball uni 4.5mm alu (4)

802261 Track-rod 47mm L+R Titan (2)

804213 Servo saver top + bottom alu (2)

804214 Steering lever 23T alu

804215 Steering lever 24T alu

804216 Steering lever 25T alu

804252 Pivotball 5.8mm alu coated (4)

804253 Pivotball 5.8mm alu coated long (4)

SHOCK ABSORBERS

6442 O-ring adj.nut (10)

160110 Shock RCM bottom O-ring (8)

160124 Shock set RCM-SS (2)

160125 Shock RCM-SS bottom (2)

160126 Shock RCM-SS top nut (2)

160127 Shock RCM-SS shaft (2)

160128 Shock RCM membrane soft (4)

160129 Shock end frame RCM-SS (4+4)

160130 Shock spring support + bushing RCM-SS (4+4)

160131 Shock RCM -SS body alu (2)

160134 Shock pistons set RCM (2x4)

909405 Shock adj nut alu +o-ring (4)

Optionals

160107 Shock RCM membrane (4)

160132 Shock bushing delrin RCM -SS (4)

160133 Shock shaft Tin coated RCM-SS (2)

SHOCK SPRINGS

160297 Spring grey short (2.6/14.8) TC (2)

160298 Spring black short (2.9/16.5) TC (2)

160299 Spring green short (3.5/19.9) TC (2)

160300 Spring white L23 (2.3/13) (2)

160301 Spring yellow L23 (2.8/16) (2)

160302 Spring oranje L23 (3.4/19.5) (2)

160303 Spring red L23 (4.1/23.5) (2)

160304 Spring pink L23 (4.0/28) (2)

160305 Spring blauw L23 (5.8/33) (2)

160306 Spring paars L23 (6.8/39) (2)

160307 Spring groen L23 (8/45.5) (2)

160308 Spring grijs L23 (9/51.5) (2)

160309 Spring black L23 (10/57) (2)

160310 Spring-set L23 (5x2)

CHASSIS

804313 Chassis carbon 747E

804315 Topdeck carbon 747E

BODYMOUNTS FR and RR

1667 Body clip medium (10)

802211 Bodymount adjustable front (3)

802361 Bodymount adjustable rear (2)

804164 Bodyplate front

Optionals

802212 Body-mount alu (2 long+1short)

802362 Body-mount alu short rear (2)

804293 Body support washers med + high (5+5)

804295 Bumperplate carbon 747

804296 Body support rear (2)

FRONT SECTION

1650 Steel balls 5.8mm (4)

1652 Steel balls 5.8mm long (4)

401058 Rod 16mm steel (4)

401091 Balljoint-4-5 (12)

401092 Balljoint-4-5-short (10)

411048 Adjust Nut for Front Suspension

411063 Pivot Ball Upper Suspension Arm

411253 Pivotball uni 4.5mm (4)

801219 Ball 8.5mm alu short (4)

802260 Track-rod 47mm l+r (2)

802335 Arb ball 3mm (2)

802352 Cvd insert (2)

802354 Pin 3x9.8mm (4)

803134 Spacer arb RR 720 (2)

803198 Adj nut nylon (10)

803212 Steeringblock 1 degr. L+R

803240 Cvd shaft-set complete pro (2)

803241 Cvd driveshaft pro (2)

804110 Wishbone front lw L+R

804117 Pivot pin fr lw (2)

804118 Pivot pin fr up (2)

804120 Servo saver axle

804143 Antiroll bar fr 2.5mm

804147 Diff pully front

804153 Eccenters front

804154 Servo levers steering (3)

804164 Bodyplate front

804257 Geardiff uni 1/10 GP

804260 Bearingblock 747 FR L

804261 Bearingblock 747 FR R

804267 Suspension bracket 747 FR UP (2)

804269 Suspension bracket 747 FR LW (2)

804279 Wishbone 747 FR UP (2)

804280 Bearing bracket 747 FR UP

804283 Bumper 747

804284 Wheelhexagon -1mm (2)

804305 Shocktower carbon 747 fr low

804316 Belt 40S3M516 low friction

808214 Spacer-set caster

902138 Rod 23mm set (2)

903231 Balljoint set 14+6+2

Optionals

- 401154 rod 16mm titan (2)
- 401155 rod 16mm alu (2)
- 401433 Weight set brass 5gr - 12gr - 20gr (2+1+1)
- 401500 Pivotball uni 4.5mm alu (4)
- 801218 Wheel hexagons 0mm (2)
- 802255 Wheel hexagons 0mm clamp (4)
- 802261 Track-rod 47mm L+R Titan (2)
- 803211 Steeringblock 0 degr. L+R
- 804141 Antiroll bar fr 1.8mm
- 804142 Antiroll bar fr 2.2mm
- 804144 Antiroll bar fr 2.8mm
- 804177 Antirollbar set front (4)
- 804194 Wheel hexagons +1mm clamp (4)
- 804195 Wheel hexagons -1mm clamp (4)
- 804207 Wishbone front lw L+R Hard
- 804210 Suspension bracket FR alu L+R (2)
- 804214 Steering lever 23T alu
- 804215 Steering lever 24T alu
- 804216 Steering lever 25T alu
- 804252 Pivotball 5.8mm alu coated (4)
- 804253 Pivotball 5.8mm alu coated long (4)
- 804254 Anti-roll bar bal 3.0mm alu (2)
- 804295 Bumperplate carbon 747

MIDDLE SECTION

- 401399 Bearingmount middleshaft alu
- 804112 Pulley 2sp shaft 20+21T (2)
- 804113 Pulley middle 18+21T (2)
- 804221 Bushing rear anti-roll bar L+R 733/966 V2 (2)
- 804309 Batterymount Carbon 747E
- 804310 Belt tensioner bracket 747E (2)
- 804311 Bracket middleshaft L 747E
- 804312 Bracket middleshaft R 747E
- 804317 Midshaft 747E
- 901255 Belt tensioner set

Optionals

- 401433 Weight set brass 5gr - 12gr - 20gr (2+1+1)
- 804196 Pully 18T mid alu
- 804197 Pully 21T mid side alu
- 401566 Battery strap velcro

REAR SECTION

- 1647 Balls 6mm (4)
- 1650 Steel balls 5.8mm (4)
- 1652 Steel balls 5.8mm long (4)
- 401091 Balljoint-4-5 (12)
- 401092 Balljoint-4-5-short (10)
- 411253 Pivotball uni 4.5mm (4)
- 801218 Wheelhexagon alu 0mm (2)
- 802332 Driveshaft (2)
- 802339 Ball anti-roll bar 2,5mm (2)
- 803134 Spacer anti-roll bar RR 720 (2)
- 804116 Pivot pin rr lw (2)
- 804129 Rearplate narrow
- 804133 Suspension bracket rr fr narrow
- 804140 Camberlink bracket rear
- 804146 Shim conical 3x2mm (4)
- 804148 Diff pully rear
- 804152 Eccenters rear
- 804168 Bearingblock rr
- 804202 Belt Rear 50S3M186
- 804219 Bearingblock rear upper 733 V2
- 804232 Shim 3x6x3 (4)
- 804257 Geardiff uni 1/10 GP
- 804278 Anti-rollbar bracket carbon RR (2)
- 804281 Wishbone 747 RR LW medium (2)
- 804282 Upright 747 (2)
- 804286 Anti-roll bar RR 1,8mm

- 804306 Shocktower carbon 747 rr low
- 902138 Rod 23mm set (2)
- 903231 Balljoint set 14+6+2

Optionals

- 401433 Weight set brass 5gr - 12gr - 20gr (2+1+1)
- 401500 Pivotball uni 4.5mm alu (4)
- 801218 Wheelhexagon alu 0mm (2)
- 802255 Wheel hexagons 0mm clamp (4)
- 803135 Anti-roll bar RR 2.5mm
- 803168 Anti-roll bar RR 2.3mm
- 804128 Rearplate wide
- 804132 Suspension bracket rr fr wide
- 804194 Wheel hexagons +1mm clamp (4)
- 804203 Belt Rear 50S3M186 Low Friction
- 804206 Wishbone rear lw L+R Hard
- 804229 Upright alu / inserts 733 (2+2)
- 804230 Insert upright alu 733 (2)
- 804277 Shock bracket carbon L+R RR
- 804287 Anti-roll bar RR 1,9mm
- 804288 Anti-roll bar RR 2,0mm
- 804289 Anti-roll bar RR 2,1mm
- 804290 Anti-roll bar RR 2,2mm
- 804294 Wishbone 747 RR LW hard (2)
- 804251 Pivotball 5.8mm d-s alu coated (4)
- 804252 Pivotball 5.8mm alu coated (4)
- 804253 Pivotball 5.8mm alu coated long (4)
- 804254 Anti-roll bar bal 3.0mm alu (2)

TRANSMISION

- 801215 Wheelaxle (2)
- 802332 Driveshaft (2)
- 802352 Cvd insert (2)
- 802354 Pin 3x9.8mm (4)
- 803240 Cvd shaft-set complete pro (2)
- 803241 Cvd driveshaft pro (2)
- 804147 Diff pully front
- 804148 Diff pully rear
- 804176 Geardiff x-ring (4)
- 804187 Oil set 733 diff-shock (3)
- 804188 Gear diff outdrive (2)
- 804202 Belt Rear 50S3M186
- 804257 Geardiff uni 1/10 GP
- 804258 Geardiff uni 1/10 GP housing
- 804259 Geardiff uni 1/10 GP revision set
- 804292 Diff gasket 1/10 GP (3)
- 804316 Belt 40S3M516 low friction

Optionals

- 801218 Wheel hexagons 0mm (2)
- 802255 Wheel hexagons 0mm clamp (4)
- 804184 Front one-way axle set
- 804185 Front solid axle
- 804194 Wheel hexagons +1mm clamp (4)
- 804195 Wheel hexagons -1mm clamp (4)
- 804203 Belt Rear 50S3M186 Low Friction
- 804284 Wheelhexagon -1mm (2)

BALL-BEARINGS

- 1311 Ballbearing 5x8x2.5 (2)
- 1312 Ballbearing 5x8 mm flanged (2)
- 1344 Ball-bearing 10x15x4 hs (2)
- 1346 Ball-bearing 12x18 hs (2)

Spur Gears

- 120015 Spur gear 48P / 69T
- 120016 Spur gear 48P / 72T
- 120017 Spur gear 48P / 75T

Pinions

- 120155 Motor-pinion alu hard 48P / 17T

120156 Motor-pinion alu hard 48P / 18T
 120157 Motor-pinion alu hard 48P / 19T
 120158 Motor-pinion alu hard 48P / 20T
 120159 Motor-pinion alu hard 48P / 21T
 120160 Motor-pinion alu hard 48P / 22T
 120161 Motor-pinion alu hard 48P / 23T
 120162 Motor-pinion alu hard 48P / 24T
 120163 Motor-pinion alu hard 48P / 25T
 120164 Motor-pinion alu hard 48P / 26T
 120165 Motor-pinion alu hard 48P / 27T

FASTNERS

110101 Screw allen countersunk m4x8 (10)
 110102 Screw allen countersunk m4x10 (10)
 110103 Screw allen countersunk m4x16 (10)
 110104 Screw allen countersunk m3x8 (10)
 110105 Screw allen countersunk m4x12 (10)
 110106 Screw allen flanged roundhead m5x12 (10)
 110107 Screw allen cilinderhead m3x16 (10)
 110108 Screw allen roundhead m3x6 (10)
 110109 Screw allen roundhead m3x10 (10)
 110110 Screw allen roundhead m3x16 (10)
 110111 Screw allen roundhead m3x14 (10)
 110112 Screw allen roundhead m3x12 (10)
 110113 Screw allen roundhead m4x8 (10)
 110114 Setscrew allen m3x8 (10)
 110115 Setscrew allen m3x4 (10)
 110116 Setscrew allen m3x3 (10)
 110117 Setscrew allen m3x12 (10)
 110118 Setscrew allen m4x4 (10)
 110119 Setscrew allen m4x6 (10)
 110120 Setscrew allen m4x10 (10)
 110121 Setscrew allen m5x6 (10)
 110122 Screw allen countersunk m3x6 (10)
 110123 Screw philips roundhead 3.5x13 (10)
 110124 Screw allen roundhead m3x8 (10)
 110125 Screw allen countersunk m3x20 (10)
 110126 Screw allen countersunk m2.5x12 (10)
 110127 Screw allen countersunk m3x12 (10)
 110128 Screw allen roundhead m3x5 (10)
 110129 Screw allen cilinderhead m3x10 (10)
 110130 Screw allen roundhead m2.5x6 (10)
 110131 Screw allen roundhead m2.5x10 (10)
 110132 Screw allen countersunk m3x16 (10)
 110133 Screw philipshead countersunk 2.5x8 wide (10)
 110134 Screw philipshead countersunk 2.5x10 wide (10)
 110135 Screw allen countersunk M2.5x10 (10)
 110136 Screw allen countersunk M2.5x8 (10)
 110137 Setscrew allen M3x6 (10)
 110138 Screw allen countersunk M4x14 (10)
 110139 Screw allen countersunk M3x40 (10)
 110140 Screw allen roundhead M3x20 (10)
 110141 Screw allen roundhead M3x22 (10)
 110142 Screw allen roundhead M3x25 (10)
 110143 Screw allen roundhead M4x18 (10)
 110144 Screw allen roundhead M3x18 (10)
 110145 Screw allen roundhead flanged M3x12 (10)
 110146 Screw allen roundhead flanged M3x16 (10)
 110147 Screw ph roundhead M2.5x5 (10)
 110148 Setscrew allen M5x4 (10)
 110149 Screw allen countersink M2x10 (10)
 110150 Screw M6x12 nylon black (2)
 110151 Screw allen cilinderhead M4x10 (10)
 110152 Screw allen cilinderhead M3x8 (10)
 110153 Screw allen roundhead M2.3x4(10)
 110154 Setscrew allen M3x10 (10)

110155 Setscrew allen M3x5 (10)
 110156 Screw allen countersunk M2.2x6 (10)
 110157 Screw allen countersunk M3x5 (10)
 110158 Screw allen countersunk M3x15 (10)
 110159 Screw allen countersunk M3x18 (10)
 110160 Screw allen cilinderhead M2.2x12 (10)
 110161 Screw allen cilinderhead M2x6 (10)
 110162 Setscrew allen M3x2.5 (10)
 110163 Setscrew allen M3x2 (10)
 110164 Screw allen roundhead M3x4 (10)
 110165 Screw allen cilinderhead M2x5 (10)
 110166 Screw allen countersunk M2.5x5 (10)
 110167 Screw allen roundhead flanged M3x18 (10)
 110168 Screw allen roundhead flanged M3.5x10 (10)
 110169 Screw allen roundhead flanged M4x10 (10)
 110170 Screw allen roundhead flanged M3x28 (10)
 110171 Screw ph roundhead widethread 2.5x6 (10)
 110172 Screw allen roundhead flanged M3X6 (10)
 110173 Screw ph countersunk widethread 2.5x12 (10)
 110174 Screw allen countersunk M4x6 (10)
 110175 Screw allen cilinderhead M3x40 (10)
 110176 Screw allen cilinderhead M3x18 (10)
 110177 Screw allen roundhead M4x12 (10)
 110178 Screw allen cilinderhead M3x14 (10)
 110179 Screw allen roundhead M2.5x8 (10)
 110180 Setscrew allen M5x10 (10)
 110181 Screw M5x10 + Nut nylon black (4+4)
 110182 Screw allen roundhead M2x4 (10)
 110183 Screw allen countersunk M3x10 (10)
 110184 Screw allen countersunk M3x14 (10)
 110185 Screw allen cilinderhead M3x30 (10)
 110186 Screw allen cilinderhead M3x35 (10)
 110187 Setscrew allen M3x16 (10)
 110200 Pin 2.5x8 (10)
 110201 Pin 3x12 (10)
 110202 Pin 5x5 (10)
 110203 Pin 3x14 (10)
 110204 Pin 3x20 (10)
 110205 Pin 3x22 (10)
 110206 Pin 2.5x22 (10)
 110207 Pin 2.5x12 (10)
 110208 Pin nra 2x9.8 (4)
 110209 Pin nra 2x18 (4)
 110210 Pin 3x13 (10)
 110211 Pin 2.5x13 (10)
 110212 Pin 2.5x17 (10)
 110213 Pin 2.5x10 (10)
 110214 Pin 3x15 (10)
 110215 Pin 2x12 (10)
 110216 Pin 2.5x15 (10)
 110217 Pin 2x9 (10)
 110218 Pin 3x10 (10)
 110219 Pin 2x14 (10)
 110220 Pin 1.5x8 (10)
 110300 E-clip 2.3 (10)
 110301 E-clip 3.2 (10)
 110302 E-clip 4.0 (10)
 110303 E-clip 5.0 (10)
 110304 E-clip 7.0 (10)
 110305 Seger clip 12x1.0 (10)
 110306 E-clip 6.0 (10)
 110307 E-clip 9.0 (10)
 110400 Shim 6.0x10x0.2(10)
 110401 Shim3.2x7x0.5 (10)



110402	Nut nylock M3 (10)	190188	T-shirt Serpent Splash orange (S)
110403	Nut nylock M4 (10)	190189	T-shirt Serpent Splash orange (M)
110404	Shim 6x8x0.3 (10)	190190	T-shirt Serpent Splash orange (L)
110405	Nut nylock M4 flanged (10)	190191	T-shirt Serpent Splash orange (XL)
110406	Nut nylock M2.2 (10)	190192	T-shirt Serpent Splash orange (XXL)
110407	Nut M3 (10)	190193	T-shirt Serpent Splash orange (XXXL)
110408	Shim 3X5X0.3 (10)	190194	T-shirt Serpent Splash black (S)
110409	Shim 3X5X1 (10)	190195	T-shirt Serpent Splash black (M)
110410	Shim 3X5X2 (10)	190196	T-shirt Serpent Splash black (L)
110411	Shim 3X5X4 (10)	190197	T-shirt Serpent Splash black (XL)
110412	Shim 3.5X8X1 (10)	190198	T-shirt Serpent Splash black (XXL)
110413	Shim 3.5X12X0.2 (10)	190199	T-shirt Serpent Splash black (XXXL)
110414	Shim 3X6X0.1 (10)	190201	Hoody sweater Serpent black-zip (S)
110415	Shim 3X6X0.5 (10)	190202	Hoody sweater Serpent black-zip (M)
110416	Shim 3X6X0.8 (10)	190203	Hoody sweater Serpent black-zip (L)
110417	Shim 3X6X3 (10)	190204	Hoody sweater Serpent black-zip (XL)
110418	Shim 4X8X0.1 (10)	190205	Hoody sweater Serpent black-zip (2XL)
110419	Shim 4X9.5X1 (10)	190206	Hoody sweater Serpent black-zip (3XL)
110420	Shim 4X9.5X2(10)	190207	Hoody sweater Serpent black-zip (4XL)
110421	Shim 4X9.5X4(10)	190215	T-shirt Serpent WC edition black (S)
110422	Shim 4X10X0.3 (10)	190216	T-shirt Serpent WC edition black (M)
110423	Shim 5X8X0.1 (10)	190217	T-shirt Serpent WC edition black (L)
110424	Shim 5X8X0.3 (10)	190218	T-shirt Serpent WC edition black (XL)
110425	Shim 5X10X0.3 (10)	190219	T-shirt Serpent WC edition black (XXL)
110426	Shim 5X10X0.5 (10)	190220	T-shirt Serpent WC edition black (XXXL)
110427	Shim 5X15X0.3 (10)		
110428	Shim 6.5X8X0.25 (10)		
110429	Shim 6X11.75X0.2 (10)		
110431	Shim 8X11X0.1 (10)		
110432	Shim 8X11X0.2 (10)		
110433	Shim 12X15X0.25 (10)		
110434	Shim 12X18X0.3 (10)		
110435	Shim 13X16X0.2 (10)		
110436	Shim 3x5x3 (10)		
110437	Nut M2.5 (10)		
110438	Shim 2.5x6x0.5 (10)		
110439	Shim 3x7.5x1 (10)		
110440	Shim 2.5x5x0.4 (10)		
110441	Nut nylock M3 flanged (10)		
110442	Shim 4x8x0.6 (10)		
110443	Shim 5x15x0.2 (10)		
110444	Nut M4 nylon (10)		
110445	Shim 4x10x0.2 (10)		
110446	Shim 5x15x0.2 (10)		
110447	Shim 3x7x7 (10)		
110448	Shim 3x6x6 (10)		
110449	Shim 3x6x1 (10)		
110450	Nut M2 (10)		
110451	Nylock nut M4 flanged alu (10)		
110452	Nut M4 flanged knurled (10)		

Pit equipment

190500	Pit-caddy
190501	Tool-bag
190502	Pit-bag medium. 3 drawers
190504	Ballcup tool
190508	Toolset for offroad (20pcs) with Tools bag
190509	Allen wrench 1.5 x 120mm
190510	Allen wrench 2.0 x 120mm
190511	Allen wrench 2.5 x 120mm
190512	Allen wrench 3.0 x 120mm
190513	Ball driver Hex wrench 2.0 x 120mm
190514	Ball driver Hex wrench 2.5 x 120mm
190515	Ball driver Hex wrench 3.0 x 120mm
190516	Tool tip allen wrench 1.5 x 120mm
190517	Tool tip allen wrench 2.0 x 120mm
190518	Tool tip allen wrench 2.5 x 120mm
190519	Tool tip allen wrench 3.0 x 120mm
190520	Tool tip Ball driver Hex wrench 2.0 x 120mm
190521	Tool tip Ball driver Hex wrench 2.5 x 120mm
190522	Tool tip Ball driver Hex wrench 3.0 x 120mm
190523	Turnbuckle wrench 3mm
190524	Turnbuckle wrench 4mm
190525	Turnbuckle wrench 5mm
190526	Flat head screwdriver 3.0 x 150mm
190527	Flat head screwdriver 4.0 x 150mm
190528	Phillips screwdriver 2.0 x 45mm
190529	Phillips screwdriver 3.5 x 120mm
190530	Phillips screwdriver 5.8 x 120mm
190531	Nut driver 5.0 x 100mm
190532	Nut driver 5.5 x 100mm
190533	Nut driver 7.0 x 100mm
190534	Reamer with end cap for lexan body
190535	Exhaust spring / Caster clip remover
190536	Wrench-glowplug / Clutchnut - 10mm long
190537	Flywheel wrench tool wheel nut for 1/8 off road buggy
190538	Flywheel wrench
190539	Nut driver 4.5 x 100mm

Merchandising

1891	Serpent medium promo decal 20x12.5 (2)
1892	Serpent windowshop decal 20x12.5 (2 sided)
1893	Serpent decal XL (30x60cm)
1895	Shopping-bag Serpent orange
1897	Towel Serpent large
1898	Lanyard Serpent orange
190156	Polo shirt Serpent black-orange (S)
190157	Polo shirt Serpent black-orange (M)
190158	Polo shirt Serpent black-orange (L)
190159	Polo shirt Serpent black-orange (XL)
190160	Polo shirt Serpent black-orange (XXL)
190161	Polo shirt Serpent black-orange (XXXL)
190172	Winter jacket Serpent (S)
190173	Winter jacket Serpent (M)
190174	Winter jacket Serpent (L)
190175	Winter jacket Serpent (XL)
190176	Winter jacket Serpent (XXL)
190208	Winter jacket Serpent (4XL)



747^e

electric powered



www.serpent.com - info@serpent.com

